

Transmission of material in this release is embargoed until
8:30 a.m. (EST) Friday, March 8, 2013

USDL-13-0389

Technical information:

Household data: (202) 691-6378 • cpsinfo@bls.gov • www.bls.gov/cps

Establishment data: (202) 691-6555 • cesinfo@bls.gov • www.bls.gov/ces

Media contact: (202) 691-5902 • PressOffice@bls.gov

THE EMPLOYMENT SITUATION — FEBRUARY 2013

Total **nonfarm payroll employment** increased by 236,000 in February, and the **unemployment rate** edged down to 7.7 percent, the U.S. Bureau of Labor Statistics reported today. Employment increased in professional and business services, construction, and health care.

Chart 1. Unemployment rate, seasonally adjusted, February 2011 – February 2013

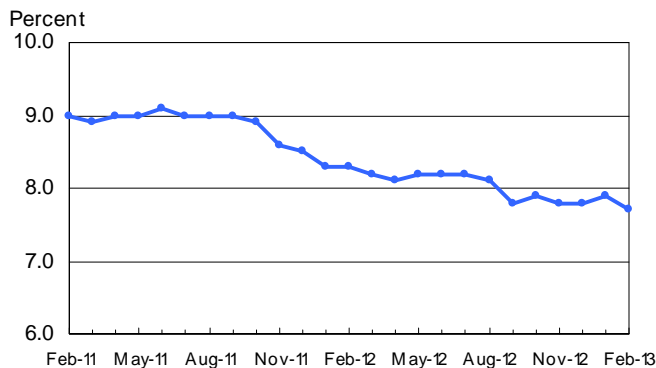
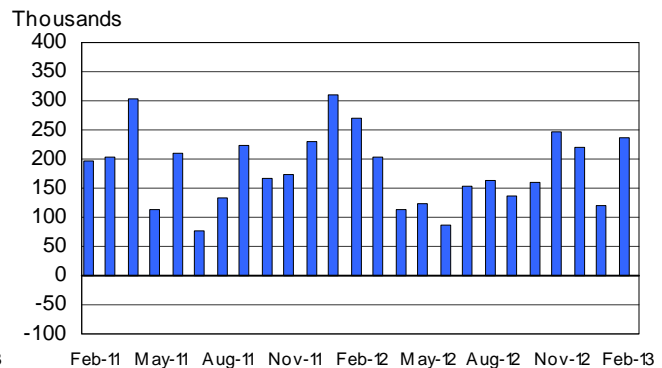


Chart 2. Nonfarm payroll employment over-the-month change, seasonally adjusted, February 2011 – February 2013



Household Survey Data

The **unemployment rate** edged down to 7.7 percent in February but has shown little movement, on net, since September 2012. The number of **unemployed persons**, at 12.0 million, also edged lower in February. (See table A-1.)

Among the **major worker groups**, the unemployment rate for whites (6.8 percent) declined in February while the rates for adult men (7.1 percent), adult women (7.0 percent), teenagers (25.1 percent), blacks (13.8 percent), and Hispanics (9.6 percent) showed little or no change. The jobless rate for Asians was 6.1 percent (not seasonally adjusted), little changed from a year earlier. (See tables A-1, A-2, and A-3.)

In February, the number of **long-term unemployed** (those jobless for 27 weeks or more) was about unchanged at 4.8 million. These individuals accounted for 40.2 percent of the unemployed. (See table A-12.)

The **employment-population ratio** held at 58.6 percent in February. The **civilian labor force participation rate**, at 63.5 percent, changed little. (See table A-1.)

The number of persons employed **part time for economic reasons**, at 8.0 million, was essentially unchanged in February. These individuals were working part time because their hours had been cut back or because they were unable to find a full-time job. (See table A-8.)

In February, 2.6 million persons were **marginally attached to the labor force**, the same as a year earlier. (The data are not seasonally adjusted.) These individuals were not in the labor force, wanted and were available for work, and had looked for a job sometime in the prior 12 months. They were not counted as unemployed because they had not searched for work in the 4 weeks preceding the survey. (See table A-16.)

Among the marginally attached, there were 885,000 **discouraged workers** in February, down slightly from a year earlier. (These data are not seasonally adjusted.) Discouraged workers are persons not currently looking for work because they believe no jobs are available for them. The remaining 1.7 million persons marginally attached to the labor force in February had not searched for work in the 4 weeks preceding the survey for reasons such as school attendance or family responsibilities. (See table A-16.)

Establishment Survey Data

Total **nonfarm payroll employment** increased by 236,000 in February, with job gains in professional and business services, construction, and health care. In the prior 3 months, employment had risen by an average of 195,000 per month. (See table B-1.)

Professional and business services added 73,000 jobs in February; employment in the industry had changed little (+16,000) in January. In February, employment in administrative and support services, which includes employment services and services to buildings, rose by 44,000. Accounting and bookkeeping services added 11,000 jobs, and growth continued in computer systems design and in management and technical consulting services.

In February, employment in **construction** increased by 48,000. Since September, construction employment has risen by 151,000. In February, job growth occurred in specialty trade contractors, with this gain about equally split between residential (+17,000) and nonresidential specialty trade contractors (+15,000). Nonresidential building construction also added jobs (+6,000).

The **health care** industry continued to add jobs in February (+32,000). Within health care, there was a job gain of 14,000 in ambulatory health care services, which includes doctors' offices and outpatient care centers. Employment also increased over the month in nursing and residential care facilities (+9,000) and hospitals (+9,000).

Employment in the **information** industry increased over the month (+20,000), lifted by a large job gain in the motion picture and sound recording industry.

Employment continued to trend up in **retail trade** in February (+24,000). Retail trade has added 252,000 jobs over the past 12 months. Employment also continued to trend up over the month in **food services and drinking places** and in **wholesale trade**. Employment in other major industries showed little change over the month.

In February, the **average workweek for all employees** on private nonfarm payrolls edged up by 0.1 hour to 34.5 hours. The manufacturing workweek rose by 0.2 hour to 40.9 hours, and factory overtime edged up by 0.1 hour to 3.4 hours. The average workweek for **production and nonsupervisory employees** on private nonfarm payrolls increased by 0.2 hour to 33.8 hours. (See tables B-2 and B-7.)

Average hourly earnings for all employees on private nonfarm payrolls rose by 4 cents to \$23.82. Over the year, average hourly earnings have risen by 2.1 percent. In February, average hourly earnings of private-sector **production and nonsupervisory employees** increased by 5 cents to \$20.04. (See tables B-3 and B-8.)

The change in total nonfarm payroll employment for December was revised from +196,000 to +219,000, and the change for January was revised from +157,000 to +119,000.

The Employment Situation for March is scheduled to be released on Friday, April 5, 2013, at 8:30 a.m. (EDT).

HOUSEHOLD DATA

Summary table A. Household data, seasonally adjusted

[Numbers in thousands]

Category	Feb. 2012	Dec. 2012	Jan. 2013	Feb. 2013	Change from: Jan. 2013- Feb. 2013
Employment status					
Civilian noninstitutional population.....	242,435	244,350	244,663	244,828	165
Civilian labor force.....	154,825	155,511	155,654	155,524	-130
Participation rate.....	63.9	63.6	63.6	63.5	-0.1
Employed.....	142,019	143,305	143,322	143,492	170
Employment-population ratio.....	58.6	58.6	58.6	58.6	0.0
Unemployed.....	12,806	12,206	12,332	12,032	-300
Unemployment rate.....	8.3	7.8	7.9	7.7	-0.2
Not in labor force.....	87,611	88,839	89,008	89,304	296
Unemployment rates					
Total, 16 years and over.....	8.3	7.8	7.9	7.7	-0.2
Adult men (20 years and over).....	7.7	7.2	7.3	7.1	-0.2
Adult women (20 years and over).....	7.6	7.3	7.3	7.0	-0.3
Teenagers (16 to 19 years).....	23.7	23.5	23.4	25.1	1.7
White.....	7.4	6.9	7.0	6.8	-0.2
Black or African American.....	14.1	14.0	13.8	13.8	0.0
Asian (not seasonally adjusted).....	6.3	6.6	6.5	6.1	-
Hispanic or Latino ethnicity.....	10.6	9.6	9.7	9.6	-0.1
Total, 25 years and over.....	6.9	6.5	6.5	6.3	-0.2
Less than a high school diploma.....	12.9	11.7	12.0	11.2	-0.8
High school graduates, no college.....	8.3	8.0	8.1	7.9	-0.2
Some college or associate degree.....	7.3	6.9	7.0	6.7	-0.3
Bachelor's degree and higher.....	4.2	3.9	3.7	3.8	0.1
Reason for unemployment					
Job losers and persons who completed temporary jobs.....	7,187	6,408	6,637	6,522	-115
Job leavers.....	1,035	983	981	956	-25
Reentrants.....	3,341	3,587	3,515	3,340	-175
New entrants.....	1,382	1,291	1,287	1,279	-8
Duration of unemployment					
Less than 5 weeks.....	2,563	2,676	2,766	2,667	-99
5 to 14 weeks.....	2,817	2,838	3,028	2,782	-246
15 to 26 weeks.....	1,974	1,895	1,858	1,695	-163
27 weeks and over.....	5,392	4,766	4,708	4,797	89
Employed persons at work part time					
Part time for economic reasons.....	8,127	7,918	7,973	7,988	15
Slack work or business conditions.....	5,440	4,928	5,126	5,136	10
Could only find part-time work.....	2,397	2,616	2,630	2,578	-52
Part time for noneconomic reasons.....	18,868	18,763	18,464	18,908	444
Persons not in the labor force (not seasonally adjusted)					
Marginally attached to the labor force.....	2,608	2,614	2,443	2,588	-
Discouraged workers.....	1,006	1,068	804	885	-

- Over-the-month changes are not displayed for not seasonally adjusted data.

NOTE: Persons whose ethnicity is identified as Hispanic or Latino may be of any race. Detail for the seasonally adjusted data shown in this table will not necessarily add to totals because of the independent seasonal adjustment of the various series. Updated population controls are introduced annually with the release of January data.

ESTABLISHMENT DATA
Summary table B. Establishment data, seasonally adjusted

Category	Feb. 2012	Dec. 2012	Jan. 2013 ^p	Feb. 2013 ^p
EMPLOYMENT BY SELECTED INDUSTRY (Over-the-month change, in thousands)				
Total nonfarm.....	271	219	119	236
Total private.....	265	224	140	246
Goods-producing.....	51	58	41	67
Mining and logging.....	7	7	4	5
Construction.....	15	38	25	48
Manufacturing.....	29	13	12	14
Durable goods ¹	26	11	6	6
Motor vehicles and parts.....	5.8	1.4	1.4	0.7
Nondurable goods.....	3	2	6	8
Private service-providing ¹	214	166	99	179
Wholesale trade.....	11.9	6.5	15.5	5.9
Retail trade.....	-24.3	6.2	29.0	23.7
Transportation and warehousing.....	17.9	34.8	-20.4	-1.3
Information.....	11	-9	1	20
Financial activities.....	10	9	6	7
Professional and business services ¹	76	35	16	73
Temporary help services.....	47.3	12.3	-3.0	16.0
Education and health services ¹	69	36	9	24
Health care and social assistance.....	46.2	42.9	19.3	39.1
Leisure and hospitality.....	47	40	30	24
Other services.....	-4	6	11	1
Government.....	6	-5	-21	-10
WOMEN AND PRODUCTION AND NONSUPERVISORY EMPLOYEES AS A PERCENT OF ALL EMPLOYEES ²				
Total nonfarm women employees.....	49.4	49.3	49.3	49.3
Total private women employees.....	47.8	47.9	47.9	47.8
Total private production and nonsupervisory employees.....	82.6	82.6	82.6	82.6
HOURS AND EARNINGS ALL EMPLOYEES				
Total private				
Average weekly hours.....	34.6	34.5	34.4	34.5
Average hourly earnings.....	\$ 23.33	\$ 23.75	\$ 23.78	\$ 23.82
Average weekly earnings.....	\$807.22	\$819.38	\$818.03	\$821.79
Index of aggregate weekly hours (2007=100) ³	96.3	97.5	97.3	97.8
Over-the-month percent change.....	0.5	0.5	-0.2	0.5
Index of aggregate weekly payrolls (2007=100) ⁴	107.2	110.4	110.4	111.1
Over-the-month percent change.....	0.8	0.8	0.0	0.6
HOURS AND EARNINGS PRODUCTION AND NONSUPERVISORY EMPLOYEES				
Total private				
Average weekly hours.....	33.8	33.7	33.6	33.8
Average hourly earnings.....	\$ 19.64	\$ 19.93	\$ 19.99	\$ 20.04
Average weekly earnings.....	\$663.83	\$671.64	\$671.66	\$677.35
Index of aggregate weekly hours (2002=100) ³	103.6	104.9	104.6	105.5
Over-the-month percent change.....	0.3	0.2	-0.3	0.9
Index of aggregate weekly payrolls (2002=100) ⁴	135.9	139.6	139.7	141.2
Over-the-month percent change.....	0.4	0.5	0.1	1.1
DIFFUSION INDEX (Over 1-month span) ⁵				
Total private (266 industries).....	62.2	65.2	64.7	63.3
Manufacturing (81 industries).....	57.4	58.0	57.4	60.5

1 Includes other industries, not shown separately.

2 Data relate to production employees in mining and logging and manufacturing, construction employees in construction, and nonsupervisory employees in the service-providing industries.

3 The indexes of aggregate weekly hours are calculated by dividing the current month's estimates of aggregate hours by the corresponding annual average aggregate hours.

4 The indexes of aggregate weekly payrolls are calculated by dividing the current month's estimates of aggregate weekly payrolls by the corresponding annual average aggregate weekly payrolls.

5 Figures are the percent of industries with employment increasing plus one-half of the industries with unchanged employment, where 50 percent indicates an equal balance between industries with increasing and decreasing employment.

p Preliminary

Frequently Asked Questions about Employment and Unemployment Estimates

1. Why are there two monthly measures of employment?

The household survey and establishment survey both produce sample-based estimates of employment, and both have strengths and limitations. The establishment survey employment series has a smaller margin of error on the measurement of month-to-month change than the household survey because of its much larger sample size. An over-the-month employment change of about 100,000 is statistically significant in the establishment survey, while the threshold for a statistically significant change in the household survey is about 400,000. However, the household survey has a more expansive scope than the establishment survey because it includes self-employed workers whose businesses are unincorporated, unpaid family workers, agricultural workers, and private household workers, who are excluded by the establishment survey. The household survey also provides estimates of employment for demographic groups. For more information on the differences between the two surveys, please visit www.bls.gov/web/empsit/ces_cps_trends.pdf.

2. Are undocumented immigrants counted in the surveys?

It is likely that both surveys include at least some undocumented immigrants. However, neither the establishment nor the household survey is designed to identify the legal status of workers. Therefore, it is not possible to determine how many are counted in either survey. The establishment survey does not collect data on the legal status of workers. The household survey does include questions which identify the foreign and native born, but it does not include questions about the legal status of the foreign born. Data on the foreign and native born are published each month in table A-7 of The Employment Situation news release.

3. Why does the establishment survey have revisions?

The establishment survey revises published estimates to improve its data series by incorporating additional information that was not available at the time of the initial publication of the estimates. The establishment survey revises its initial monthly estimates twice, in the immediately succeeding 2 months, to incorporate additional sample receipts from respondents in the survey and recalculated seasonal adjustment factors. For more information on the monthly revisions, please visit www.bls.gov/ces/cesrevinfo.htm.

On an annual basis, the establishment survey incorporates a benchmark revision that re-anchors estimates to nearly complete employment counts available from unemployment insurance tax records. The benchmark helps to control for sampling and modeling errors in the estimates. For more information on the annual benchmark revision, please visit www.bls.gov/web/empsit/cesbmart.htm.

4. Does the establishment survey sample include small firms?

Yes; about 40 percent of the establishment survey sample is comprised of business establishments with fewer than 20 employees. The establishment survey sample is designed to maximize the reliability of the statewide total nonfarm employment estimate; firms from all states, size classes, and industries are appropriately sampled to achieve that goal.

5. Does the establishment survey account for employment from new businesses?

Yes; monthly establishment survey estimates include an adjustment to account for the net employment change generated by business births and deaths. The adjustment comes from an econometric model that forecasts the monthly net jobs impact of business births and deaths based on the actual past values of the net impact that can be observed with a lag from the Quarterly Census of Employment and Wages. The establishment survey uses modeling rather than sampling for this purpose because the survey is not immediately able to bring new businesses into the sample. There is an unavoidable lag between the birth of a new firm and its appearance on the sampling frame and availability for selection. BLS adds new businesses to the survey twice a year.

6. Is the count of unemployed persons limited to just those people receiving unemployment insurance benefits?

No; the estimate of unemployment is based on a monthly sample survey of households. All persons who are without jobs and are actively seeking and available to work are included among the unemployed. (People on temporary layoff are included even if they do not actively seek work.) There is no requirement or question relating to unemployment insurance benefits in the monthly survey.

7. Does the official unemployment rate exclude people who want a job but are not currently looking for work?

Yes; however, there are separate estimates of persons outside the labor force who want a job, including those who are not currently looking because they believe no jobs are available (discouraged workers). In addition, alternative measures of labor underutilization (some of which include discouraged workers and other groups not officially counted as unemployed) are published each month in table A-15 of The Employment Situation news release. For more information about these alternative measures, please visit www.bls.gov/cps/lfcharacteristics.htm#altmeasures.

8. How can unusually severe weather affect employment and hours estimates?

In the establishment survey, the reference period is the pay period that includes the 12th of the month. Unusually severe weather is more likely to have an impact on average weekly hours than on employment. Average weekly hours are estimated for paid time during the pay period, including pay for holidays, sick leave, or other time off. The impact of severe weather on hours estimates typically, but not always, results in a reduction in average weekly hours. For example, some employees may be off work for part of the pay period and not receive pay for the time missed, while some workers, such as those dealing with cleanup or repair, may work extra hours.

In order for severe weather conditions to reduce the estimate of payroll employment, employees have to be off work without pay for the entire pay period. Slightly more than 20 percent of all employees in the payroll survey sample have a weekly pay period. Employees who receive pay for any part of the pay period, even 1 hour, are counted in the payroll employment figures. It is not possible to quantify the effect of extreme weather on estimates of over-the-month change in employment.

In the household survey, the reference period is generally the calendar week that includes the 12th of the month. Persons who miss the entire week's work for weather-related events are counted as employed whether or not they are paid for the time off. The household survey collects data on the number of persons who had a job but were not at work due to bad weather. It also provides a measure of the number of persons who usually work full time but had reduced hours. Current and historical data are available on the household survey's most requested statistics page at <http://data.bls.gov/cgi-bin/surveymost?ln>.

Technical Note

This news release presents statistics from two major surveys, the Current Population Survey (CPS; household survey) and the Current Employment Statistics survey (CES; establishment survey). The household survey provides information on the labor force, employment, and unemployment that appears in the "A" tables, marked HOUSEHOLD DATA. It is a sample survey of about 60,000 eligible households conducted by the U.S. Census Bureau for the U.S. Bureau of Labor Statistics (BLS).

The establishment survey provides information on employment, hours, and earnings of employees on nonfarm payrolls; the data appear in the "B" tables, marked ESTABLISHMENT DATA. BLS collects these data each month from the payroll records of a sample of nonagricultural business establishments. Each month the CES program surveys about 145,000 businesses and government agencies, representing approximately 557,000 individual worksites, in order to provide detailed industry data on employment, hours, and earnings of workers on nonfarm payrolls. The active sample includes approximately one-third of all nonfarm payroll employees.

For both surveys, the data for a given month relate to a particular week or pay period. In the household survey, the reference period is generally the calendar week that contains the 12th day of the month. In the establishment survey, the reference period is the pay period including the 12th, which may or may not correspond directly to the calendar week.

Coverage, definitions, and differences between surveys

Household survey. The sample is selected to reflect the entire civilian noninstitutional population. Based on responses to a series of questions on work and job search activities, each person 16 years and over in a sample household is classified as employed, unemployed, or not in the labor force.

People are classified as *employed* if they did any work at all as paid employees during the reference week; worked in their own business, profession, or on their own farm; or worked without pay at least 15 hours in a family business or farm. People are also counted as employed if they were temporarily absent from their jobs because of illness, bad weather, vacation, labor-management disputes, or personal reasons.

People are classified as *unemployed* if they meet all of the following criteria: they had no employment during the reference week; they were available for work at that time; and they made specific efforts to find employment sometime during the 4-week period ending with the reference week. Persons laid off from a job and expecting recall need not be looking for work to be counted as unemployed. The unemployment data derived from the household survey in no way depend upon the eligibility for or receipt of unemployment insurance benefits.

The *civilian labor force* is the sum of employed and unemployed persons. Those persons not classified as

employed or unemployed are *not in the labor force*. The *unemployment rate* is the number unemployed as a percent of the labor force. The *labor force participation rate* is the labor force as a percent of the population, and the *employment-population ratio* is the employed as a percent of the population. Additional information about the household survey can be found at www.bls.gov/cps/documentation.htm.

Establishment survey. The sample establishments are drawn from private nonfarm businesses such as factories, offices, and stores, as well as from federal, state, and local government entities. *Employees on nonfarm payrolls* are those who received pay for any part of the reference pay period, including persons on paid leave. Persons are counted in each job they hold. *Hours and earnings* data are produced for the private sector for all employees and for production and nonsupervisory employees. *Production and nonsupervisory* employees are defined as production and related employees in manufacturing and mining and logging, construction workers in construction, and non-supervisory employees in private service-providing industries.

Industries are classified on the basis of an establishment's principal activity in accordance with the 2012 version of the North American Industry Classification System. Additional information about the establishment survey can be found at www.bls.gov/ces/.

Differences in employment estimates. The numerous conceptual and methodological differences between the household and establishment surveys result in important distinctions in the employment estimates derived from the surveys. Among these are:

- The household survey includes agricultural workers, self-employed workers whose businesses are unincorporated, unpaid family workers, and private household workers among the employed. These groups are excluded from the establishment survey.
- The household survey includes people on unpaid leave among the employed. The establishment survey does not.
- The household survey is limited to workers 16 years of age and older. The establishment survey is not limited by age.
- The household survey has no duplication of individuals, because individuals are counted only once, even if they hold more than one job. In the establishment survey, employees working at more than one job and thus appearing on more than one payroll are counted separately for each appearance.

Seasonal adjustment

Over the course of a year, the size of the nation's labor force and the levels of employment and unemployment undergo regularly occurring fluctuations. These events may result from seasonal changes in weather, major holidays, and the opening and closing of schools. The effect of such seasonal variation can be very large.

Because these seasonal events follow a more or less regular pattern each year, their influence on the level of a series can be tempered by adjusting for regular seasonal variation. These adjustments make nonseasonal developments, such as declines in employment or increases in the participation of women in the labor force, easier to spot. For example, in the household survey, the large number of youth entering the labor force each June is likely to obscure any other changes that have taken place relative to May, making it difficult to determine if the level of economic activity has risen or declined. Similarly, in the establishment survey, payroll employment in education declines by about 20 percent at the end of the spring term and later rises with the start of the fall term, obscuring the underlying employment trends in the industry. Because seasonal employment changes at the end and beginning of the school year can be estimated, the statistics can be adjusted to make underlying employment patterns more discernable. The seasonally adjusted figures provide a more useful tool with which to analyze changes in month-to-month economic activity.

Many seasonally adjusted series are independently adjusted in both the household and establishment surveys. However, the adjusted series for many major estimates, such as total payroll employment, employment in most major sectors, total employment, and unemployment are computed by aggregating independently adjusted component series. For example, total unemployment is derived by summing the adjusted series for four major age-sex components; this differs from the unemployment estimate that would be obtained by directly adjusting the total or by combining the duration, reasons, or more detailed age categories.

For both the household and establishment surveys, a concurrent seasonal adjustment methodology is used in which new seasonal factors are calculated each month using all relevant data, up to and including the data for the current month. In the household survey, new seasonal factors are used to adjust only the current month's data. In the establishment survey, however, new seasonal factors are used each month to adjust the three most recent monthly estimates. The prior 2 months are routinely revised to incorporate additional sample reports and recalculated seasonal adjustment factors. In both surveys, 5-year revisions to historical data are made once a year.

Reliability of the estimates

Statistics based on the household and establishment surveys are subject to both sampling and nonsampling

error. When a sample, rather than the entire population, is surveyed, there is a chance that the sample estimates may differ from the true population values they represent. The component of this difference that occurs because samples differ by chance is known as *sampling error*, and its variability is measured by the standard error of the estimate. There is about a 90-percent chance, or level of confidence, that an estimate based on a sample will differ by no more than 1.6 standard errors from the true population value because of sampling error. BLS analyses are generally conducted at the 90-percent level of confidence.

For example, the confidence interval for the monthly change in total nonfarm employment from the establishment survey is on the order of plus or minus 90,000. Suppose the estimate of nonfarm employment increases by 50,000 from one month to the next. The 90-percent confidence interval on the monthly change would range from -60,000 to +140,000 (50,000 +/- 90,000). These figures do not mean that the sample results are off by these magnitudes, but rather that there is about a 90-percent chance that the true over-the-month change lies within this interval. Since this range includes values of less than zero, we could not say with confidence that nonfarm employment had, in fact, increased that month. If, however, the reported nonfarm employment rise was 250,000, then all of the values within the 90-percent confidence interval would be greater than zero. In this case, it is likely (at least a 90-percent chance) that nonfarm employment had, in fact, risen that month. At an unemployment rate of around 6.0 percent, the 90-percent confidence interval for the monthly change in unemployment as measured by the household survey is about +/- 300,000, and for the monthly change in the unemployment rate it is about +/- 0.2 percentage point.

In general, estimates involving many individuals or establishments have lower standard errors (relative to the size of the estimate) than estimates which are based on a small number of observations. The precision of estimates also is improved when the data are cumulated over time, such as for quarterly and annual averages.

The household and establishment surveys are also affected by *nonsampling error*, which can occur for many reasons, including the failure to sample a segment of the population, inability to obtain information for all respondents in the sample, inability or unwillingness of respondents to provide correct information on a timely basis, mistakes made by respondents, and errors made in the collection or processing of the data.

For example, in the establishment survey, estimates for the most recent 2 months are based on incomplete returns; for this reason, these estimates are labeled preliminary in the tables. It is only after two successive revisions to a monthly estimate, when nearly all sample reports have been received, that the estimate is considered final.

Another major source of nonsampling error in the establishment survey is the inability to capture, on a timely basis, employment generated by new firms. To correct for this systematic underestimation of employment growth, an estimation procedure with two components is used to

account for business births. The first component excludes employment losses from business deaths from sample-based estimation in order to offset the missing employment gains from business births. This is incorporated into the sample-based estimation procedure by simply not reflecting sample units going out of business, but imputing to them the same employment trend as the other firms in the sample. This procedure accounts for most of the net birth/death employment.

The second component is an ARIMA time series model designed to estimate the residual net birth/death employment not accounted for by the imputation. The historical time series used to create and test the ARIMA model was derived from the unemployment insurance universe micro-level database, and reflects the actual residual net of births and deaths over the past 5 years.

The sample-based estimates from the establishment

survey are adjusted once a year (on a lagged basis) to universe counts of payroll employment obtained from administrative records of the unemployment insurance program. The difference between the March sample-based employment estimates and the March universe counts is known as a benchmark revision, and serves as a rough proxy for total survey error. The new benchmarks also incorporate changes in the classification of industries. Over the past decade, absolute benchmark revisions for total nonfarm employment have averaged 0.3 percent, with a range from -0.7 to 0.6 percent.

Other information

Information in this release will be made available to sensory impaired individuals upon request. Voice phone: (202) 691-5200; Federal Relay Service: (800) 877-8339.

HOUSEHOLD DATA

Table A-1. Employment status of the civilian population by sex and age

[Numbers in thousands]

Employment status, sex, and age	Not seasonally adjusted			Seasonally adjusted ¹					
	Feb. 2012	Jan. 2013	Feb. 2013	Feb. 2012	Oct. 2012	Nov. 2012	Dec. 2012	Jan. 2013	Feb. 2013
TOTAL									
Civilian noninstitutional population.....	242,435	244,663	244,828	242,435	243,983	244,174	244,350	244,663	244,828
Civilian labor force.....	154,114	154,794	154,727	154,825	155,576	155,319	155,511	155,654	155,524
Participation rate.....	63.6	63.3	63.2	63.9	63.8	63.6	63.6	63.6	63.5
Employed.....	140,684	141,614	142,228	142,019	143,328	143,277	143,305	143,322	143,492
Employment-population ratio.....	58.0	57.9	58.1	58.6	58.7	58.7	58.6	58.6	58.6
Unemployed.....	13,430	13,181	12,500	12,806	12,248	12,042	12,206	12,332	12,032
Unemployment rate.....	8.7	8.5	8.1	8.3	7.9	7.8	7.8	7.9	7.7
Not in labor force.....	88,322	89,868	90,100	87,611	88,407	88,855	88,839	89,008	89,304
Persons who currently want a job.....	6,376	6,781	6,842	6,376	6,584	6,827	6,750	6,631	6,821
Men, 16 years and over									
Civilian noninstitutional population.....	116,896	118,033	118,117	116,896	117,710	117,810	117,902	118,033	118,117
Civilian labor force.....	81,609	82,249	82,180	82,156	82,661	82,514	82,545	82,940	82,823
Participation rate.....	69.8	69.7	69.6	70.3	70.2	70.0	70.0	70.3	70.1
Employed.....	74,035	74,823	75,160	75,271	76,027	75,983	76,060	76,290	76,375
Employment-population ratio.....	63.3	63.4	63.6	64.4	64.6	64.5	64.5	64.6	64.7
Unemployed.....	7,573	7,426	7,020	6,885	6,634	6,530	6,486	6,650	6,447
Unemployment rate.....	9.3	9.0	8.5	8.4	8.0	7.9	7.9	8.0	7.8
Not in labor force.....	35,288	35,783	35,937	34,740	35,049	35,297	35,357	35,093	35,295
Men, 20 years and over									
Civilian noninstitutional population.....	108,188	109,448	109,541	108,188	109,096	109,206	109,308	109,448	109,541
Civilian labor force.....	78,986	79,583	79,511	79,301	79,679	79,568	79,695	80,016	79,910
Participation rate.....	73.0	72.7	72.6	73.3	73.0	72.9	72.9	73.1	72.9
Employed.....	72,152	72,905	73,248	73,179	73,845	73,821	73,949	74,139	74,249
Employment-population ratio.....	66.7	66.6	66.9	67.6	67.7	67.6	67.7	67.7	67.8
Unemployed.....	6,834	6,678	6,262	6,123	5,834	5,747	5,746	5,877	5,661
Unemployment rate.....	8.7	8.4	7.9	7.7	7.3	7.2	7.2	7.3	7.1
Not in labor force.....	29,201	29,865	30,030	28,886	29,416	29,638	29,613	29,432	29,631
Women, 16 years and over									
Civilian noninstitutional population.....	125,539	126,630	126,710	125,539	126,273	126,364	126,447	126,630	126,710
Civilian labor force.....	72,505	72,545	72,547	72,669	72,915	72,806	72,965	72,715	72,701
Participation rate.....	57.8	57.3	57.3	57.9	57.7	57.6	57.7	57.4	57.4
Employed.....	66,648	66,790	67,068	66,748	67,301	67,294	67,245	67,032	67,116
Employment-population ratio.....	53.1	52.7	52.9	53.2	53.3	53.3	53.2	52.9	53.0
Unemployed.....	5,857	5,755	5,479	5,921	5,614	5,512	5,721	5,682	5,585
Unemployment rate.....	8.1	7.9	7.6	8.1	7.7	7.6	7.8	7.8	7.7
Not in labor force.....	53,034	54,085	54,163	52,870	53,358	53,558	53,482	53,916	54,009
Women, 20 years and over									
Civilian noninstitutional population.....	117,170	118,348	118,433	117,170	117,980	118,079	118,170	118,348	118,433
Civilian labor force.....	69,823	69,778	69,865	69,775	70,041	69,907	70,059	69,749	69,772
Participation rate.....	59.6	59.0	59.0	59.5	59.4	59.2	59.3	58.9	58.9
Employed.....	64,486	64,589	64,973	64,457	65,014	64,988	64,954	64,675	64,867
Employment-population ratio.....	55.0	54.6	54.9	55.0	55.1	55.0	55.0	54.6	54.8
Unemployed.....	5,337	5,189	4,891	5,318	5,027	4,918	5,105	5,074	4,905
Unemployment rate.....	7.6	7.4	7.0	7.6	7.2	7.0	7.3	7.3	7.0
Not in labor force.....	47,348	48,570	48,568	47,396	47,939	48,172	48,111	48,599	48,661
Both sexes, 16 to 19 years									
Civilian noninstitutional population.....	17,078	16,867	16,854	17,078	16,907	16,890	16,871	16,867	16,854
Civilian labor force.....	5,305	5,434	5,352	5,748	5,856	5,845	5,756	5,889	5,842
Participation rate.....	31.1	32.2	31.8	33.7	34.6	34.6	34.1	34.9	34.7
Employed.....	4,046	4,120	4,006	4,383	4,469	4,468	4,402	4,508	4,376
Employment-population ratio.....	23.7	24.4	23.8	25.7	26.4	26.5	26.1	26.7	26.0
Unemployed.....	1,259	1,314	1,346	1,365	1,387	1,376	1,355	1,381	1,466
Unemployment rate.....	23.7	24.2	25.1	23.7	23.7	23.6	23.5	23.4	25.1
Not in labor force.....	11,773	11,434	11,502	11,329	11,051	11,045	11,115	10,978	11,012

¹ The population figures are not adjusted for seasonal variation; therefore, identical numbers appear in the unadjusted and seasonally adjusted columns.

NOTE: Updated population controls are introduced annually with the release of January data.

HOUSEHOLD DATA

Table A-2. Employment status of the civilian population by race, sex, and age

[Numbers in thousands]

Employment status, race, sex, and age	Not seasonally adjusted			Seasonally adjusted ¹					
	Feb. 2012	Jan. 2013	Feb. 2013	Feb. 2012	Oct. 2012	Nov. 2012	Dec. 2012	Jan. 2013	Feb. 2013
WHITE									
Civilian noninstitutional population.....	192,691	193,776	193,859	192,691	193,633	193,748	193,849	193,776	193,859
Civilian labor force.....	123,223	123,090	122,922	123,818	123,794	123,540	123,774	123,971	123,626
Participation rate.....	63.9	63.5	63.4	64.3	63.9	63.8	63.9	64.0	63.8
Employed.....	113,467	113,675	114,036	114,687	115,205	115,124	115,289	115,266	115,250
Employment-population ratio.....	58.9	58.7	58.8	59.5	59.5	59.4	59.5	59.5	59.5
Unemployed.....	9,755	9,415	8,887	9,131	8,588	8,416	8,485	8,705	8,376
Unemployment rate.....	7.9	7.6	7.2	7.4	6.9	6.8	6.9	7.0	6.8
Not in labor force.....	69,469	70,686	70,937	68,873	69,839	70,207	70,076	69,805	70,233
Men, 20 years and over									
Civilian labor force.....	64,327	64,506	64,336	64,633	64,718	64,509	64,646	64,924	64,720
Participation rate.....	73.5	73.2	72.9	73.9	73.5	73.2	73.3	73.7	73.4
Employed.....	59,266	59,587	59,741	60,187	60,493	60,397	60,609	60,652	60,659
Employment-population ratio.....	67.8	67.6	67.7	68.8	68.7	68.5	68.7	68.8	68.8
Unemployed.....	5,061	4,919	4,595	4,445	4,225	4,112	4,037	4,272	4,061
Unemployment rate.....	7.9	7.6	7.1	6.9	6.5	6.4	6.2	6.6	6.3
Women, 20 years and over									
Civilian labor force.....	54,660	54,250	54,291	54,578	54,423	54,366	54,452	54,318	54,224
Participation rate.....	59.1	58.3	58.3	59.0	58.5	58.4	58.5	58.4	58.2
Employed.....	50,889	50,688	50,980	50,873	51,020	51,008	51,015	50,869	50,946
Employment-population ratio.....	55.0	54.5	54.7	55.0	54.9	54.8	54.8	54.7	54.7
Unemployed.....	3,772	3,562	3,311	3,705	3,403	3,358	3,437	3,450	3,278
Unemployment rate.....	6.9	6.6	6.1	6.8	6.3	6.2	6.3	6.4	6.0
Both sexes, 16 to 19 years									
Civilian labor force.....	4,235	4,334	4,295	4,607	4,653	4,665	4,676	4,729	4,682
Participation rate.....	33.3	34.5	34.2	36.2	36.9	37.0	37.2	37.7	37.3
Employed.....	3,312	3,400	3,315	3,626	3,692	3,718	3,665	3,746	3,645
Employment-population ratio.....	26.0	27.1	26.4	28.5	29.3	29.5	29.1	29.8	29.1
Unemployed.....	923	934	981	981	961	946	1,011	983	1,037
Unemployment rate.....	21.8	21.5	22.8	21.3	20.7	20.3	21.6	20.8	22.1
BLACK OR AFRICAN AMERICAN									
Civilian noninstitutional population.....	29,760	30,190	30,223	29,760	30,027	30,061	30,093	30,190	30,223
Civilian labor force.....	18,219	18,554	18,531	18,344	18,716	18,374	18,403	18,641	18,639
Participation rate.....	61.2	61.5	61.3	61.6	62.3	61.1	61.2	61.7	61.7
Employed.....	15,651	15,897	15,969	15,761	16,011	15,952	15,827	16,073	16,059
Employment-population ratio.....	52.6	52.7	52.8	53.0	53.3	53.1	52.6	53.2	53.1
Unemployed.....	2,568	2,656	2,562	2,582	2,705	2,422	2,577	2,568	2,580
Unemployment rate.....	14.1	14.3	13.8	14.1	14.5	13.2	14.0	13.8	13.8
Not in labor force.....	11,541	11,636	11,691	11,416	11,311	11,687	11,690	11,549	11,583
Men, 20 years and over									
Civilian labor force.....	8,187	8,391	8,386	8,245	8,296	8,225	8,298	8,382	8,437
Participation rate.....	67.7	67.9	67.7	68.2	67.6	66.9	67.4	67.8	68.2
Employed.....	6,942	7,181	7,258	7,060	7,127	7,165	7,134	7,262	7,352
Employment-population ratio.....	57.4	58.1	58.6	58.4	58.1	58.3	58.0	58.8	59.4
Unemployed.....	1,245	1,210	1,128	1,185	1,169	1,060	1,164	1,120	1,085
Unemployment rate.....	15.2	14.4	13.4	14.4	14.1	12.9	14.0	13.4	12.9
Women, 20 years and over									
Civilian labor force.....	9,380	9,512	9,490	9,387	9,668	9,444	9,454	9,545	9,491
Participation rate.....	62.6	62.4	62.2	62.6	63.8	62.3	62.2	62.7	62.2
Employed.....	8,272	8,323	8,339	8,234	8,440	8,360	8,305	8,367	8,302
Employment-population ratio.....	55.2	54.6	54.7	54.9	55.7	55.1	54.7	54.9	54.4
Unemployed.....	1,108	1,189	1,151	1,153	1,228	1,085	1,149	1,178	1,189
Unemployment rate.....	11.8	12.5	12.1	12.3	12.7	11.5	12.2	12.3	12.5
Both sexes, 16 to 19 years									
Civilian labor force.....	651	651	656	712	752	704	651	714	711
Participation rate.....	24.3	25.0	25.3	26.6	28.7	27.0	25.1	27.5	27.4
Employed.....	436	393	373	468	444	427	387	444	404
Employment-population ratio.....	16.3	15.1	14.4	17.5	17.0	16.4	14.9	17.1	15.6
Unemployed.....	215	258	284	244	307	277	264	270	307
Unemployment rate.....	33.1	39.6	43.2	34.3	40.9	39.3	40.5	37.8	43.1
ASIAN									
Civilian noninstitutional population.....	12,713	13,068	13,185	-	-	-	-	-	-

See footnotes at end of table.

HOUSEHOLD DATA

Table A-2. Employment status of the civilian population by race, sex, and age — Continued

[Numbers in thousands]

Employment status, race, sex, and age	Not seasonally adjusted			Seasonally adjusted ¹					
	Feb. 2012	Jan. 2013	Feb. 2013	Feb. 2012	Oct. 2012	Nov. 2012	Dec. 2012	Jan. 2013	Feb. 2013
Civilian labor force.....	8,016	8,465	8,566	-	-	-	-	-	-
Participation rate.....	63.1	64.8	65.0	-	-	-	-	-	-
Employed.....	7,508	7,917	8,040	-	-	-	-	-	-
Employment-population ratio.....	59.1	60.6	61.0	-	-	-	-	-	-
Unemployed.....	508	548	526	-	-	-	-	-	-
Unemployment rate.....	6.3	6.5	6.1	-	-	-	-	-	-
Not in labor force.....	4,696	4,603	4,619	-	-	-	-	-	-

¹ The population figures are not adjusted for seasonal variation; therefore, identical numbers appear in the unadjusted and seasonally adjusted columns.

- Data not available.

NOTE: Estimates for the above race groups will not sum to totals shown in table A-1 because data are not presented for all races. Updated population controls are introduced annually with the release of January data.

HOUSEHOLD DATA

Table A-3. Employment status of the Hispanic or Latino population by sex and age

[Numbers in thousands]

Employment status, sex, and age	Not seasonally adjusted			Seasonally adjusted ¹					
	Feb. 2012	Jan. 2013	Feb. 2013	Feb. 2012	Oct. 2012	Nov. 2012	Dec. 2012	Jan. 2013	Feb. 2013
HISPANIC OR LATINO ETHNICITY									
Civilian noninstitutional population.....	36,384	37,094	37,169	36,384	37,058	37,147	37,231	37,094	37,169
Civilian labor force.....	24,167	24,454	24,519	24,201	24,572	24,544	24,539	24,572	24,563
Participation rate.....	66.4	65.9	66.0	66.5	66.3	66.1	65.9	66.2	66.1
Employed.....	21,407	21,875	21,999	21,638	22,112	22,109	22,195	22,199	22,215
Employment-population ratio.....	58.8	59.0	59.2	59.5	59.7	59.5	59.6	59.8	59.8
Unemployed.....	2,760	2,578	2,519	2,562	2,460	2,435	2,344	2,373	2,348
Unemployment rate.....	11.4	10.5	10.3	10.6	10.0	9.9	9.6	9.7	9.6
Not in labor force.....	12,218	12,640	12,650	12,184	12,486	12,602	12,692	12,522	12,606
Men, 20 years and over									
Civilian labor force.....	13,262	13,465	13,534	-	-	-	-	-	-
Participation rate.....	81.1	80.6	80.8	-	-	-	-	-	-
Employed.....	11,881	12,155	12,304	-	-	-	-	-	-
Employment-population ratio.....	72.6	72.7	73.4	-	-	-	-	-	-
Unemployed.....	1,381	1,309	1,230	-	-	-	-	-	-
Unemployment rate.....	10.4	9.7	9.1	-	-	-	-	-	-
Women, 20 years and over									
Civilian labor force.....	9,836	9,903	9,975	-	-	-	-	-	-
Participation rate.....	60.1	59.2	59.5	-	-	-	-	-	-
Employed.....	8,752	8,922	8,980	-	-	-	-	-	-
Employment-population ratio.....	53.4	53.3	53.5	-	-	-	-	-	-
Unemployed.....	1,085	981	995	-	-	-	-	-	-
Unemployment rate.....	11.0	9.9	10.0	-	-	-	-	-	-
Both sexes, 16 to 19 years									
Civilian labor force.....	1,068	1,086	1,010	-	-	-	-	-	-
Participation rate.....	29.2	29.8	27.7	-	-	-	-	-	-
Employed.....	774	798	716	-	-	-	-	-	-
Employment-population ratio.....	21.2	21.9	19.6	-	-	-	-	-	-
Unemployed.....	294	288	294	-	-	-	-	-	-
Unemployment rate.....	27.5	26.5	29.1	-	-	-	-	-	-

1 The population figures are not adjusted for seasonal variation; therefore, identical numbers appear in the unadjusted and seasonally adjusted columns.
 - Data not available.

NOTE: Persons whose ethnicity is identified as Hispanic or Latino may be of any race. Updated population controls are introduced annually with the release of January data.

HOUSEHOLD DATA

Table A-4. Employment status of the civilian population 25 years and over by educational attainment

[Numbers in thousands]

Educational attainment	Not seasonally adjusted			Seasonally adjusted					
	Feb. 2012	Jan. 2013	Feb. 2013	Feb. 2012	Oct. 2012	Nov. 2012	Dec. 2012	Jan. 2013	Feb. 2013
Less than a high school diploma									
Civilian labor force.....	11,119	11,035	10,842	11,495	11,251	11,097	11,120	11,125	11,256
Participation rate.....	45.1	45.1	45.4	46.6	45.8	45.3	45.1	45.5	47.2
Employed.....	9,469	9,502	9,463	10,018	9,880	9,753	9,821	9,784	9,999
Employment-population ratio.....	38.4	38.8	39.7	40.6	40.2	39.8	39.8	40.0	41.9
Unemployed.....	1,650	1,533	1,378	1,477	1,371	1,344	1,298	1,341	1,257
Unemployment rate.....	14.8	13.9	12.7	12.9	12.2	12.1	11.7	12.0	11.2
High school graduates, no college¹									
Civilian labor force.....	37,011	36,709	36,212	36,803	36,735	36,652	36,663	36,557	36,143
Participation rate.....	59.3	59.0	58.3	59.0	60.0	59.4	59.1	58.7	58.1
Employed.....	33,589	33,371	33,026	33,755	33,681	33,677	33,713	33,585	33,289
Employment-population ratio.....	53.9	53.6	53.1	54.1	55.0	54.6	54.3	54.0	53.6
Unemployed.....	3,422	3,338	3,186	3,048	3,054	2,975	2,950	2,972	2,854
Unemployment rate.....	9.2	9.1	8.8	8.3	8.3	8.1	8.0	8.1	7.9
Some college or associate degree									
Civilian labor force.....	37,485	37,225	37,478	37,257	37,662	37,274	37,397	37,201	37,291
Participation rate.....	69.5	68.4	68.4	69.1	68.8	68.4	68.7	68.3	68.0
Employed.....	34,669	34,496	34,914	34,523	35,043	34,832	34,831	34,587	34,776
Employment-population ratio.....	64.3	63.4	63.7	64.0	64.0	63.9	64.0	63.5	63.5
Unemployed.....	2,817	2,729	2,564	2,734	2,619	2,442	2,566	2,614	2,515
Unemployment rate.....	7.5	7.3	6.8	7.3	7.0	6.6	6.9	7.0	6.7
Bachelor's degree and higher²									
Civilian labor force.....	47,841	48,968	49,489	47,840	48,670	48,858	48,859	48,991	49,436
Participation rate.....	76.3	75.7	76.0	76.3	75.3	75.5	75.9	75.8	75.9
Employed.....	45,808	47,061	47,567	45,851	46,851	46,968	46,954	47,172	47,555
Employment-population ratio.....	73.0	72.8	73.0	73.1	72.5	72.6	72.9	72.9	73.0
Unemployed.....	2,034	1,907	1,922	1,989	1,818	1,891	1,905	1,819	1,881
Unemployment rate.....	4.3	3.9	3.9	4.2	3.7	3.9	3.9	3.7	3.8

1 Includes persons with a high school diploma or equivalent.

2 Includes persons with bachelor's, master's, professional, and doctoral degrees.

NOTE: Updated population controls are introduced annually with the release of January data.

HOUSEHOLD DATA

Table A-5. Employment status of the civilian population 18 years and over by veteran status, period of service, and sex, not seasonally adjusted

[Numbers in thousands]

Employment status, veteran status, and period of service	Total		Men		Women	
	Feb. 2012	Feb. 2013	Feb. 2012	Feb. 2013	Feb. 2012	Feb. 2013
VETERANS, 18 years and over						
Civilian noninstitutional population.....	21,315	21,520	19,506	19,304	1,809	2,216
Civilian labor force.....	11,101	11,114	9,961	9,728	1,140	1,387
Participation rate.....	52.1	51.6	51.1	50.4	63.0	62.6
Employed.....	10,324	10,342	9,246	9,058	1,078	1,284
Employment-population ratio.....	48.4	48.1	47.4	46.9	59.6	57.9
Unemployed.....	777	772	715	669	61	103
Unemployment rate.....	7.0	6.9	7.2	6.9	5.4	7.4
Not in labor force.....	10,214	10,406	9,545	9,576	669	829
 Gulf War-era II veterans						
Civilian noninstitutional population.....	2,524	2,694	2,092	2,147	432	547
Civilian labor force.....	2,025	2,161	1,726	1,807	299	353
Participation rate.....	80.2	80.2	82.5	84.2	69.2	64.6
Employed.....	1,870	1,958	1,594	1,645	277	313
Employment-population ratio.....	74.1	72.7	76.2	76.6	64.0	57.1
Unemployed.....	154	203	132	162	22	41
Unemployment rate.....	7.6	9.4	7.6	9.0	7.4	11.6
Not in labor force.....	499	533	366	339	133	194
 Gulf War-era I veterans						
Civilian noninstitutional population.....	3,077	3,324	2,572	2,674	505	650
Civilian labor force.....	2,581	2,806	2,198	2,331	383	475
Participation rate.....	83.9	84.4	85.5	87.2	75.9	73.0
Employed.....	2,432	2,637	2,072	2,184	360	452
Employment-population ratio.....	79.0	79.3	80.6	81.7	71.2	69.6
Unemployed.....	149	169	126	147	23	22
Unemployment rate.....	5.8	6.0	5.7	6.3	6.1	4.7
Not in labor force.....	496	519	374	343	122	175
 World War II, Korean War, and Vietnam-era veterans						
Civilian noninstitutional population.....	10,010	10,008	9,687	9,630	323	378
Civilian labor force.....	3,242	3,080	3,122	2,956	120	124
Participation rate.....	32.4	30.8	32.2	30.7	37.1	32.8
Employed.....	3,027	2,852	2,908	2,736	119	116
Employment-population ratio.....	30.2	28.5	30.0	28.4	37.0	30.7
Unemployed.....	215	228	214	220	0	8
Unemployment rate.....	6.6	7.4	6.9	7.4	0.4	6.4
Not in labor force.....	6,768	6,928	6,565	6,674	203	254
 Veterans of other service periods						
Civilian noninstitutional population.....	5,704	5,494	5,156	4,853	549	640
Civilian labor force.....	3,253	3,068	2,916	2,633	338	434
Participation rate.....	57.0	55.8	56.5	54.3	61.5	67.8
Employed.....	2,995	2,895	2,673	2,493	322	403
Employment-population ratio.....	52.5	52.7	51.8	51.4	58.8	62.9
Unemployed.....	258	172	243	140	15	32
Unemployment rate.....	7.9	5.6	8.3	5.3	4.5	7.3
Not in labor force.....	2,451	2,426	2,240	2,220	211	206
NONVETERANS, 18 years and over						
Civilian noninstitutional population.....	212,182	214,160	92,771	94,137	119,411	120,024
Civilian labor force.....	141,354	141,754	70,803	71,520	70,551	70,234
Participation rate.....	66.6	66.2	76.3	76.0	59.1	58.5
Employed.....	129,189	130,558	64,235	65,485	64,953	65,073
Employment-population ratio.....	60.9	61.0	69.2	69.6	54.4	54.2
Unemployed.....	12,165	11,196	6,568	6,035	5,597	5,161
Unemployment rate.....	8.6	7.9	9.3	8.4	7.9	7.3
Not in labor force.....	70,828	72,407	21,968	22,617	48,860	49,790

NOTE: Veterans served on active duty in the U.S. Armed Forces and were not on active duty at the time of the survey. Nonveterans never served on active duty in the U.S. Armed Forces. Veterans could have served anywhere in the world during these periods of service: Gulf War era II (September 2001-present), Gulf War era I (August 1990-August 2001), Vietnam era (August 1964-April 1975), Korean War (July 1950-January 1955), World War II (December 1941-December 1946), and other service periods (all other time periods). Veterans who served in more than one wartime period are classified only in the most recent one. Veterans who served during one of the selected wartime periods and another period are classified only in the wartime period. Beginning with data for January 2013, estimates for veterans incorporate population controls derived from the updated Department of Veterans Affairs' population model.

HOUSEHOLD DATA

Table A-6. Employment status of the civilian population by sex, age, and disability status, not seasonally adjusted

[Numbers in thousands]

Employment status, sex, and age	Persons with a disability		Persons with no disability	
	Feb. 2012	Feb. 2013	Feb. 2012	Feb. 2013
TOTAL, 16 years and over				
Civilian noninstitutional population.....	27,822	28,655	214,613	216,173
Civilian labor force.....	5,542	5,929	148,572	148,798
Participation rate.....	19.9	20.7	69.2	68.8
Employed.....	4,665	5,198	136,019	137,030
Employment-population ratio.....	16.8	18.1	63.4	63.4
Unemployed.....	878	732	12,552	11,768
Unemployment rate.....	15.8	12.3	8.4	7.9
Not in labor force.....	22,280	22,726	66,042	67,374
Men, 16 to 64 years				
Civilian labor force.....	2,458	2,746	74,926	74,959
Participation rate.....	32.9	35.1	82.1	82.0
Employed.....	2,006	2,365	68,058	68,591
Employment-population ratio.....	26.8	30.2	74.5	75.1
Unemployed.....	452	382	6,868	6,368
Unemployment rate.....	18.4	13.9	9.2	8.5
Not in labor force.....	5,013	5,077	16,378	16,400
Women, 16 to 64 years				
Civilian labor force.....	2,194	2,190	66,900	66,795
Participation rate.....	28.1	28.5	70.7	70.2
Employed.....	1,843	1,910	61,625	61,793
Employment-population ratio.....	23.6	24.8	65.1	65.0
Unemployed.....	352	280	5,276	5,002
Unemployment rate.....	16.0	12.8	7.9	7.5
Not in labor force.....	5,617	5,504	27,719	28,305
Both sexes, 65 years and over				
Civilian labor force.....	890	993	6,746	7,044
Participation rate.....	7.1	7.6	23.5	23.7
Employed.....	816	923	6,337	6,646
Employment-population ratio.....	6.5	7.0	22.1	22.4
Unemployed.....	74	70	409	398
Unemployment rate.....	8.3	7.1	6.1	5.7
Not in labor force.....	11,650	12,145	21,945	22,669

NOTE: A person with a disability has at least one of the following conditions: is deaf or has serious difficulty hearing; is blind or has serious difficulty seeing even when wearing glasses; has serious difficulty concentrating, remembering, or making decisions because of a physical, mental, or emotional condition; has serious difficulty walking or climbing stairs; has difficulty dressing or bathing; or has difficulty doing errands alone such as visiting a doctor's office or shopping because of a physical, mental, or emotional condition. Updated population controls are introduced annually with the release of January data.

HOUSEHOLD DATA

Table A-7. Employment status of the civilian population by nativity and sex, not seasonally adjusted

[Numbers in thousands]

Employment status and nativity	Total		Men		Women	
	Feb. 2012	Feb. 2013	Feb. 2012	Feb. 2013	Feb. 2012	Feb. 2013
Foreign born, 16 years and over						
Civilian noninstitutional population.....	37,463	37,858	18,237	18,408	19,226	19,451
Civilian labor force.....	24,826	25,242	14,310	14,478	10,516	10,764
Participation rate.....	66.3	66.7	78.5	78.7	54.7	55.3
Employed.....	22,470	23,163	13,001	13,347	9,469	9,816
Employment-population ratio.....	60.0	61.2	71.3	72.5	49.3	50.5
Unemployed.....	2,356	2,079	1,309	1,131	1,047	947
Unemployment rate.....	9.5	8.2	9.1	7.8	10.0	8.8
Not in labor force.....	12,636	12,617	3,927	3,930	8,710	8,687
Native born, 16 years and over						
Civilian noninstitutional population.....	204,973	206,969	98,660	99,710	106,313	107,260
Civilian labor force.....	129,288	129,486	67,299	67,702	61,989	61,784
Participation rate.....	63.1	62.6	68.2	67.9	58.3	57.6
Employed.....	118,214	119,065	61,035	61,813	57,179	57,252
Employment-population ratio.....	57.7	57.5	61.9	62.0	53.8	53.4
Unemployed.....	11,074	10,421	6,264	5,889	4,810	4,532
Unemployment rate.....	8.6	8.0	9.3	8.7	7.8	7.3
Not in labor force.....	75,685	77,483	31,361	32,007	44,324	45,476

NOTE: The foreign born are those residing in the United States who were not U.S. citizens at birth. That is, they were born outside the United States or one of its outlying areas such as Puerto Rico or Guam, to parents neither of whom was a U.S. citizen. The native born are persons who were born in the United States or one of its outlying areas such as Puerto Rico or Guam or who were born abroad of at least one parent who was a U.S. citizen. Updated population controls are introduced annually with the release of January data.

HOUSEHOLD DATA

Table A-8. Employed persons by class of worker and part-time status

[In thousands]

Category	Not seasonally adjusted			Seasonally adjusted					
	Feb. 2012	Jan. 2013	Feb. 2013	Feb. 2012	Oct. 2012	Nov. 2012	Dec. 2012	Jan. 2013	Feb. 2013
CLASS OF WORKER									
Agriculture and related industries.....	2,030	1,895	1,914	2,188	2,195	2,121	2,088	2,057	2,065
Wage and salary workers ¹	1,238	1,123	1,132	1,363	1,394	1,320	1,295	1,245	1,258
Self-employed workers, unincorporated.....	767	736	754	813	751	776	747	775	792
Unpaid family workers.....	26	36	27	-	-	-	-	-	-
Nonagricultural industries.....	138,654	139,718	140,314	139,856	141,245	141,149	141,190	141,255	141,415
Wage and salary workers ¹	130,204	131,177	131,742	131,312	132,326	132,038	132,113	132,445	132,694
Government.....	20,772	20,759	20,802	20,557	20,555	20,598	20,686	20,696	20,571
Private industries.....	109,432	110,418	110,941	110,730	111,784	111,429	111,406	111,746	112,141
Private households.....	621	799	676	-	-	-	-	-	-
Other industries.....	108,811	109,619	110,265	110,064	111,058	110,659	110,632	110,873	111,411
Self-employed workers, unincorporated.....	8,343	8,463	8,496	8,483	8,819	8,959	8,935	8,746	8,686
Unpaid family workers.....	106	78	76	-	-	-	-	-	-
PERSONS AT WORK PART TIME²									
All industries									
Part time for economic reasons ³	8,455	8,628	8,298	8,127	8,286	8,138	7,918	7,973	7,988
Slack work or business conditions.....	5,790	5,732	5,457	5,440	5,177	5,084	4,928	5,126	5,136
Could only find part-time work.....	2,338	2,540	2,474	2,397	2,618	2,648	2,616	2,630	2,578
Part time for noneconomic reasons ⁴	19,358	18,596	19,500	18,868	18,896	18,594	18,763	18,464	18,908
Nonagricultural industries									
Part time for economic reasons ³	8,302	8,506	8,163	7,989	8,162	8,029	7,812	7,867	7,865
Slack work or business conditions.....	5,694	5,649	5,354	5,353	5,105	5,025	4,887	5,047	5,045
Could only find part-time work.....	2,313	2,530	2,468	2,351	2,631	2,650	2,583	2,610	2,542
Part time for noneconomic reasons ⁴	18,980	18,259	19,201	18,456	18,527	18,310	18,469	18,182	18,549

1 Includes self-employed workers whose businesses are incorporated.

2 Refers to those who worked 1 to 34 hours during the survey reference week and excludes employed persons who were absent from their jobs for the entire week.

3 Refers to those who worked 1 to 34 hours during the reference week for an economic reason such as slack work or unfavorable business conditions, inability to find full-time work, or seasonal declines in demand.

4 Refers to persons who usually work part time for noneconomic reasons such as childcare problems, family or personal obligations, school or training, retirement or Social Security limits on earnings, and other reasons. This excludes persons who usually work full time but worked only 1 to 34 hours during the reference week for reasons such as vacations, holidays, illness, and bad weather.

- Data not available.

NOTE: Detail for the seasonally adjusted data shown in this table will not necessarily add to totals because of the independent seasonal adjustment of the various series. Updated population controls are introduced annually with the release of January data.

HOUSEHOLD DATA

Table A-9. Selected employment indicators

[Numbers in thousands]

Characteristic	Not seasonally adjusted			Seasonally adjusted					
	Feb. 2012	Jan. 2013	Feb. 2013	Feb. 2012	Oct. 2012	Nov. 2012	Dec. 2012	Jan. 2013	Feb. 2013
AGE AND SEX									
Total, 16 years and over.....	140,684	141,614	142,228	142,019	143,328	143,277	143,305	143,322	143,492
16 to 19 years.....	4,046	4,120	4,006	4,383	4,469	4,468	4,402	4,508	4,376
16 to 17 years.....	1,171	1,269	1,327	1,353	1,448	1,351	1,405	1,453	1,520
18 to 19 years.....	2,875	2,850	2,679	3,042	3,032	3,126	2,985	3,048	2,866
20 years and over.....	136,638	137,494	138,222	137,636	138,858	138,809	138,903	138,814	139,116
20 to 24 years.....	13,104	13,064	13,251	13,381	13,549	13,595	13,570	13,471	13,527
25 years and over.....	123,534	124,430	124,970	124,237	125,285	125,200	125,406	125,311	125,604
25 to 54 years.....	93,346	93,418	93,736	94,051	94,328	94,079	94,253	94,147	94,387
25 to 34 years.....	30,190	30,775	30,885	30,477	30,918	30,971	31,115	31,137	31,152
35 to 44 years.....	30,421	30,270	30,327	30,627	30,668	30,490	30,524	30,480	30,521
45 to 54 years.....	32,734	32,373	32,524	32,947	32,742	32,618	32,614	32,531	32,714
55 years and over.....	30,188	31,012	31,234	30,186	30,957	31,121	31,153	31,164	31,217
Men, 16 years and over.....	74,035	74,823	75,160	75,271	76,027	75,983	76,060	76,290	76,375
16 to 19 years.....	1,883	1,918	1,912	2,092	2,182	2,163	2,111	2,151	2,126
16 to 17 years.....	554	566	616	652	719	656	690	673	713
18 to 19 years.....	1,329	1,352	1,296	1,433	1,467	1,492	1,422	1,472	1,408
20 years and over.....	72,152	72,905	73,248	73,179	73,845	73,821	73,949	74,139	74,249
20 to 24 years.....	6,622	6,779	6,844	6,840	7,096	7,125	7,104	7,070	7,073
25 years and over.....	65,530	66,126	66,404	66,331	66,790	66,720	66,902	67,002	67,149
25 to 54 years.....	49,622	49,778	49,945	50,339	50,342	50,194	50,370	50,474	50,603
25 to 34 years.....	16,195	16,589	16,676	16,490	16,715	16,734	16,799	16,889	16,940
35 to 44 years.....	16,342	16,345	16,419	16,547	16,527	16,380	16,443	16,519	16,597
45 to 54 years.....	17,084	16,844	16,851	17,303	17,100	17,080	17,127	17,066	17,066
55 years and over.....	15,909	16,348	16,459	15,993	16,447	16,526	16,532	16,528	16,546
Women, 16 years and over.....	66,648	66,790	67,068	66,748	67,301	67,294	67,245	67,032	67,116
16 to 19 years.....	2,163	2,201	2,094	2,291	2,287	2,305	2,291	2,357	2,250
16 to 17 years.....	616	703	711	701	729	695	715	780	807
18 to 19 years.....	1,546	1,498	1,383	1,610	1,565	1,634	1,563	1,576	1,458
20 years and over.....	64,486	64,589	64,973	64,457	65,014	64,988	64,954	64,675	64,867
20 to 24 years.....	6,482	6,284	6,408	6,541	6,453	6,470	6,467	6,402	6,455
25 years and over.....	58,003	58,305	58,566	57,905	58,496	58,480	58,504	58,309	58,455
25 to 54 years.....	43,724	43,640	43,791	43,712	43,986	43,885	43,883	43,674	43,784
25 to 34 years.....	13,995	14,186	14,208	13,987	14,203	14,237	14,315	14,248	14,212
35 to 44 years.....	14,079	13,925	13,909	14,081	14,141	14,109	14,080	13,961	13,925
45 to 54 years.....	15,650	15,529	15,674	15,644	15,643	15,538	15,487	15,465	15,648
55 years and over.....	14,279	14,664	14,775	14,193	14,510	14,595	14,621	14,636	14,671
MARITAL STATUS									
Married men, spouse present.....	43,201	43,660	43,521	43,550	44,134	44,016	43,924	44,117	43,934
Married women, spouse present.....	34,603	34,488	34,656	34,357	34,561	34,576	34,611	34,271	34,400
Women who maintain families.....	9,181	9,092	9,082	-	-	-	-	-	-
FULL- OR PART-TIME STATUS									
Full-time workers ¹	112,587	113,868	114,191	114,263	115,469	115,665	115,868	115,918	115,841
Part-time workers ²	28,096	27,746	28,037	27,608	27,869	27,517	27,502	27,467	27,569
MULTIPLE JOBHOLDERS									
Total multiple jobholders.....	7,116	6,738	7,435	6,979	6,927	7,109	7,017	6,919	7,259
Percent of total employed.....	5.1	4.8	5.2	4.9	4.8	5.0	4.9	4.8	5.1
SELF-EMPLOYMENT									
Self-employed workers, incorporated.....	5,226	5,244	5,246	-	-	-	-	-	-
Self-employed workers, unincorporated.....	9,110	9,200	9,250	9,296	9,570	9,735	9,682	9,521	9,478

1 Employed full-time workers are persons who usually work 35 hours or more per week.

2 Employed part-time workers are persons who usually work less than 35 hours per week.

- Data not available.

NOTE: Detail for the seasonally adjusted data shown in this table will not necessarily add to totals because of the independent seasonal adjustment of the various series. Updated population controls are introduced annually with the release of January data.

HOUSEHOLD DATA

Table A-10. Selected unemployment indicators, seasonally adjusted

Characteristic	Number of unemployed persons (in thousands)			Unemployment rates					
	Feb. 2012	Jan. 2013	Feb. 2013	Feb. 2012	Oct. 2012	Nov. 2012	Dec. 2012	Jan. 2013	Feb. 2013
AGE AND SEX									
Total, 16 years and over.....	12,806	12,332	12,032	8.3	7.9	7.8	7.8	7.9	7.7
16 to 19 years.....	1,365	1,381	1,466	23.7	23.7	23.6	23.5	23.4	25.1
16 to 17 years.....	575	576	581	29.8	25.3	28.4	25.8	28.4	27.6
18 to 19 years.....	808	801	857	21.0	22.7	20.4	22.6	20.8	23.0
20 years and over.....	11,441	10,951	10,566	7.7	7.3	7.1	7.2	7.3	7.1
20 to 24 years.....	2,149	2,238	2,033	13.8	13.2	12.6	13.7	14.2	13.1
25 years and over.....	9,265	8,762	8,513	6.9	6.6	6.5	6.5	6.5	6.3
25 to 54 years.....	7,372	6,783	6,565	7.3	6.8	6.7	6.7	6.7	6.5
25 to 34 years.....	2,890	2,594	2,627	8.7	8.2	7.9	7.7	7.7	7.8
35 to 44 years.....	2,225	2,116	2,029	6.8	6.3	6.2	6.6	6.5	6.2
45 to 54 years.....	2,257	2,073	1,908	6.4	6.1	6.0	5.8	6.0	5.5
55 years and over.....	1,893	1,972	1,939	5.9	5.8	5.8	5.9	6.0	5.8
Men, 16 years and over.....	6,885	6,650	6,447	8.4	8.0	7.9	7.9	8.0	7.8
16 to 19 years.....	763	772	787	26.7	26.8	26.6	25.9	26.4	27.0
16 to 17 years.....	332	306	322	33.8	28.3	31.4	25.1	31.3	31.1
18 to 19 years.....	449	456	452	23.9	26.4	23.8	26.3	23.7	24.3
20 years and over.....	6,123	5,877	5,661	7.7	7.3	7.2	7.2	7.3	7.1
20 to 24 years.....	1,283	1,276	1,096	15.8	13.8	12.6	13.5	15.3	13.4
25 years and over.....	4,796	4,668	4,526	6.7	6.6	6.6	6.5	6.5	6.3
25 to 54 years.....	3,825	3,575	3,474	7.1	6.8	6.7	6.5	6.6	6.4
25 to 34 years.....	1,542	1,411	1,411	8.6	8.1	7.9	7.7	7.7	7.7
35 to 44 years.....	1,124	1,084	1,037	6.4	6.0	6.1	6.2	6.2	5.9
45 to 54 years.....	1,159	1,079	1,026	6.3	6.3	6.1	5.7	5.9	5.7
55 years and over.....	971	1,093	1,052	5.7	6.1	6.2	6.2	6.2	6.0
Women, 16 years and over.....	5,921	5,682	5,585	8.1	7.7	7.6	7.8	7.8	7.7
16 to 19 years.....	603	608	680	20.8	20.4	20.5	21.2	20.5	23.2
16 to 17 years.....	243	269	259	25.7	22.0	25.3	26.6	25.7	24.3
18 to 19 years.....	359	344	404	18.2	18.8	17.0	18.9	17.9	21.7
20 years and over.....	5,318	5,074	4,905	7.6	7.2	7.0	7.3	7.3	7.0
20 to 24 years.....	867	962	937	11.7	12.5	12.6	13.9	13.1	12.7
25 years and over.....	4,469	4,094	3,987	7.2	6.6	6.3	6.6	6.6	6.4
25 to 54 years.....	3,547	3,208	3,091	7.5	6.9	6.7	6.9	6.8	6.6
25 to 34 years.....	1,347	1,183	1,217	8.8	8.3	7.9	7.7	7.7	7.9
35 to 44 years.....	1,101	1,031	992	7.3	6.6	6.4	7.1	6.9	6.7
45 to 54 years.....	1,098	994	882	6.6	5.9	5.9	6.0	6.0	5.3
55 years and over ¹	920	915	874	6.1	5.5	5.0	5.1	5.9	5.6
MARITAL STATUS									
Married men, spouse present.....	2,306	2,120	2,071	5.0	4.6	4.7	4.7	4.6	4.5
Married women, spouse present.....	1,974	1,890	1,779	5.4	5.1	5.1	5.2	5.2	4.9
Women who maintain families ¹	1,222	1,156	1,126	11.7	11.5	10.7	11.3	11.3	11.0
FULL- OR PART-TIME STATUS									
Full-time workers ²	11,057	10,555	10,227	8.8	8.3	8.1	8.3	8.3	8.1
Part-time workers ³	1,770	1,802	1,832	6.0	6.2	6.2	6.2	6.2	6.2

1 Not seasonally adjusted.

2 Full-time workers are unemployed persons who have expressed a desire to work full time (35 hours or more per week) or are on layoff from full-time jobs.

3 Part-time workers are unemployed persons who have expressed a desire to work part time (less than 35 hours per week) or are on layoff from part-time jobs.

NOTE: Detail for the seasonally adjusted data shown in this table will not necessarily add to totals because of the independent seasonal adjustment of the various series. Updated population controls are introduced annually with the release of January data.

HOUSEHOLD DATA

Table A-11. Unemployed persons by reason for unemployment

[Numbers in thousands]

Reason	Not seasonally adjusted			Seasonally adjusted					
	Feb. 2012	Jan. 2013	Feb. 2013	Feb. 2012	Oct. 2012	Nov. 2012	Dec. 2012	Jan. 2013	Feb. 2013
NUMBER OF UNEMPLOYED									
Job losers and persons who completed temporary jobs.....	7,866	7,575	7,130	7,187	6,536	6,429	6,408	6,637	6,522
On temporary layoff.....	1,526	1,772	1,425	1,135	1,077	1,080	1,085	1,155	1,078
Not on temporary layoff.....	6,340	5,803	5,705	6,052	5,460	5,349	5,323	5,483	5,443
Permanent job losers.....	4,923	4,334	4,276	4,726	4,261	4,151	4,075	4,208	4,128
Persons who completed temporary jobs.....	1,416	1,469	1,429	1,326	1,199	1,198	1,248	1,275	1,315
Job leavers.....	1,032	1,014	950	1,035	1,009	926	983	981	956
Reentrants.....	3,337	3,497	3,308	3,341	3,319	3,325	3,587	3,515	3,340
New entrants.....	1,196	1,095	1,111	1,382	1,302	1,326	1,291	1,287	1,279
PERCENT DISTRIBUTION									
Job losers and persons who completed temporary jobs.....	58.6	57.5	57.0	55.5	53.7	53.5	52.2	53.4	53.9
On temporary layoff.....	11.4	13.4	11.4	8.8	8.8	9.0	8.8	9.3	8.9
Not on temporary layoff.....	47.2	44.0	45.6	46.8	44.9	44.6	43.4	44.1	45.0
Job leavers.....	7.7	7.7	7.6	8.0	8.3	7.7	8.0	7.9	7.9
Reentrants.....	24.8	26.5	26.5	25.8	27.3	27.7	29.2	28.3	27.6
New entrants.....	8.9	8.3	8.9	10.7	10.7	11.0	10.5	10.4	10.6
UNEMPLOYED AS A PERCENT OF THE CIVILIAN LABOR FORCE									
Job losers and persons who completed temporary jobs.....	5.1	4.9	4.6	4.6	4.2	4.1	4.1	4.3	4.2
Job leavers.....	0.7	0.7	0.6	0.7	0.6	0.6	0.6	0.6	0.6
Reentrants.....	2.2	2.3	2.1	2.2	2.1	2.1	2.3	2.3	2.1
New entrants.....	0.8	0.7	0.7	0.9	0.8	0.9	0.8	0.8	0.8

NOTE: Updated population controls are introduced annually with the release of January data.

HOUSEHOLD DATA

Table A-12. Unemployed persons by duration of unemployment

[Numbers in thousands]

Duration	Not seasonally adjusted			Seasonally adjusted					
	Feb. 2012	Jan. 2013	Feb. 2013	Feb. 2012	Oct. 2012	Nov. 2012	Dec. 2012	Jan. 2013	Feb. 2013
NUMBER OF UNEMPLOYED									
Less than 5 weeks.....	2,366	3,246	2,440	2,563	2,633	2,596	2,676	2,766	2,667
5 to 14 weeks.....	3,454	3,316	3,366	2,817	2,847	2,757	2,838	3,028	2,782
15 weeks and over.....	7,609	6,618	6,694	7,366	6,829	6,604	6,661	6,566	6,493
15 to 26 weeks.....	2,199	1,854	1,903	1,974	1,813	1,820	1,895	1,858	1,695
27 weeks and over.....	5,411	4,764	4,791	5,392	5,017	4,784	4,766	4,708	4,797
Average (mean) duration, in weeks.....	39.1	33.6	36.0	39.9	39.9	39.7	38.1	35.3	36.9
Median duration, in weeks.....	19.3	14.7	17.1	20.1	19.6	18.9	18.0	16.0	17.8
PERCENT DISTRIBUTION									
Less than 5 weeks.....	17.6	24.6	19.5	20.1	21.4	21.7	22.0	22.4	22.3
5 to 14 weeks.....	25.7	25.2	26.9	22.1	23.1	23.1	23.3	24.5	23.3
15 weeks and over.....	56.7	50.2	53.6	57.8	55.5	55.2	54.7	53.1	54.4
15 to 26 weeks.....	16.4	14.1	15.2	15.5	14.7	15.2	15.6	15.0	14.2
27 weeks and over.....	40.3	36.1	38.3	42.3	40.8	40.0	39.1	38.1	40.2

NOTE: Updated population controls are introduced annually with the release of January data.

HOUSEHOLD DATA

Table A-13. Employed and unemployed persons by occupation, not seasonally adjusted

[Numbers in thousands]

Occupation	Employed		Unemployed		Unemployment rates	
	Feb. 2012	Feb. 2013	Feb. 2012	Feb. 2013	Feb. 2012	Feb. 2013
Total, 16 years and over ¹	140,684	142,228	13,430	12,500	8.7	8.1
Management, professional, and related occupations.....	53,208	54,563	2,336	2,164	4.2	3.8
Management, business, and financial operations occupations.....	22,151	22,758	1,015	916	4.4	3.9
Professional and related occupations.....	31,058	31,805	1,320	1,248	4.1	3.8
Service occupations.....	24,751	25,136	2,810	2,740	10.2	9.8
Sales and office occupations.....	33,766	33,456	2,907	2,876	7.9	7.9
Sales and related occupations.....	15,553	14,990	1,331	1,348	7.9	8.2
Office and administrative support occupations.....	18,212	18,466	1,576	1,528	8.0	7.6
Natural resources, construction, and maintenance occupations.....	12,461	12,602	2,033	1,750	14.0	12.2
Farming, fishing, and forestry occupations.....	890	839	221	160	19.9	16.1
Construction and extraction occupations.....	6,878	6,825	1,495	1,276	17.9	15.8
Installation, maintenance, and repair occupations.....	4,693	4,938	317	314	6.3	6.0
Production, transportation, and material moving occupations.....	16,498	16,472	2,096	1,826	11.3	10.0
Production occupations.....	8,272	8,095	971	806	10.5	9.1
Transportation and material moving occupations.....	8,226	8,377	1,125	1,020	12.0	10.9

¹ Persons with no previous work experience and persons whose last job was in the U.S. Armed Forces are included in the unemployed total.

NOTE: Updated population controls are introduced annually with the release of January data.

HOUSEHOLD DATA

Table A-14. Unemployed persons by industry and class of worker, not seasonally adjusted

Industry and class of worker	Number of unemployed persons (in thousands)		Unemployment rates	
	Feb. 2012	Feb. 2013	Feb. 2012	Feb. 2013
Total, 16 years and over ¹	13,430	12,500	8.7	8.1
Nonagricultural private wage and salary workers.....	10,517	9,826	8.8	8.1
Mining, quarrying, and oil and gas extraction.....	66	53	7.2	4.8
Construction.....	1,404	1,291	17.1	15.7
Manufacturing.....	1,294	1,108	8.4	7.2
Durable goods.....	787	693	8.1	7.2
Nondurable goods.....	506	415	9.0	7.3
Wholesale and retail trade.....	1,824	1,680	8.9	8.3
Transportation and utilities.....	440	468	7.6	7.5
Information.....	247	143	8.4	5.2
Financial activities.....	498	428	5.3	4.5
Professional and business services.....	1,590	1,480	10.3	9.6
Education and health services.....	1,197	1,176	5.4	5.3
Leisure and hospitality.....	1,496	1,506	11.6	11.2
Other services.....	461	494	7.1	7.8
Agriculture and related private wage and salary workers.....	290	175	19.5	13.6
Government workers.....	848	828	3.9	3.8
Self-employed workers, unincorporated, and unpaid family workers.....	579	559	5.9	5.6

¹ Persons with no previous work experience and persons whose last job was in the U.S. Armed Forces are included in the unemployed total.

NOTE: Updated population controls are introduced annually with the release of January data.

HOUSEHOLD DATA

Table A-15. Alternative measures of labor underutilization

[Percent]

Measure	Not seasonally adjusted			Seasonally adjusted					
	Feb. 2012	Jan. 2013	Feb. 2013	Feb. 2012	Oct. 2012	Nov. 2012	Dec. 2012	Jan. 2013	Feb. 2013
U-1 Persons unemployed 15 weeks or longer, as a percent of the civilian labor force.....	4.9	4.3	4.3	4.8	4.4	4.3	4.3	4.2	4.2
U-2 Job losers and persons who completed temporary jobs, as a percent of the civilian labor force.....	5.1	4.9	4.6	4.6	4.2	4.1	4.1	4.3	4.2
U-3 Total unemployed, as a percent of the civilian labor force (official unemployment rate).....	8.7	8.5	8.1	8.3	7.9	7.8	7.8	7.9	7.7
U-4 Total unemployed plus discouraged workers, as a percent of the civilian labor force plus discouraged workers.....	9.3	9.0	8.6	8.9	8.4	8.3	8.5	8.4	8.3
U-5 Total unemployed, plus discouraged workers, plus all other persons marginally attached to the labor force, as a percent of the civilian labor force plus all persons marginally attached to the labor force.....	10.2	9.9	9.6	9.8	9.3	9.2	9.4	9.3	9.2
U-6 Total unemployed, plus all persons marginally attached to the labor force, plus total employed part time for economic reasons, as a percent of the civilian labor force plus all persons marginally attached to the labor force.....	15.6	15.4	14.9	15.0	14.5	14.4	14.4	14.4	14.3

NOTE: Persons marginally attached to the labor force are those who currently are neither working nor looking for work but indicate that they want and are available for a job and have looked for work sometime in the past 12 months. Discouraged workers, a subset of the marginally attached, have given a job-market related reason for not currently looking for work. Persons employed part time for economic reasons are those who want and are available for full-time work but have had to settle for a part-time schedule. Updated population controls are introduced annually with the release of January data.

HOUSEHOLD DATA

Table A-16. Persons not in the labor force and multiple jobholders by sex, not seasonally adjusted

[Numbers in thousands]

Category	Total		Men		Women	
	Feb. 2012	Feb. 2013	Feb. 2012	Feb. 2013	Feb. 2012	Feb. 2013
NOT IN THE LABOR FORCE						
Total not in the labor force.....	88,322	90,100	35,288	35,937	53,034	54,163
Persons who currently want a job.....	6,376	6,842	2,944	3,131	3,432	3,712
Marginally attached to the labor force ¹	2,608	2,588	1,358	1,344	1,250	1,244
Discouraged workers ²	1,006	885	612	527	394	358
Other persons marginally attached to the labor force ³	1,603	1,704	746	817	856	886
MULTIPLE JOBHOLDERS						
Total multiple jobholders ⁴	7,116	7,435	3,422	3,680	3,695	3,755
Percent of total employed.....	5.1	5.2	4.6	4.9	5.5	5.6
Primary job full time, secondary job part time.....	3,624	3,988	1,953	2,185	1,671	1,802
Primary and secondary jobs both part time.....	1,934	2,043	600	671	1,334	1,371
Primary and secondary jobs both full time.....	264	236	152	142	112	94
Hours vary on primary or secondary job.....	1,254	1,123	696	665	558	458

1 Data refer to persons who want a job, have searched for work during the prior 12 months, and were available to take a job during the reference week, but had not looked for work in the past 4 weeks.

2 Includes those who did not actively look for work in the prior 4 weeks for reasons such as thinks no work available, could not find work, lacks schooling or training, employer thinks too young or old, and other types of discrimination.

3 Includes those who did not actively look for work in the prior 4 weeks for such reasons as school or family responsibilities, ill health, and transportation problems, as well as a number for whom reason for nonparticipation was not determined.

4 Includes a small number of persons who work part time on their primary job and full time on their secondary job(s), not shown separately.

NOTE: Updated population controls are introduced annually with the release of January data.

ESTABLISHMENT DATA

Table B-1. Employees on nonfarm payrolls by industry sector and selected industry detail

[In thousands]

Industry	Not seasonally adjusted				Seasonally adjusted				Change from: Jan.2013 - Feb.2013 ^P
	Feb. 2012	Dec. 2012	Jan. 2013 ^P	Feb. 2013 ^P	Feb. 2012	Dec. 2012	Jan. 2013 ^P	Feb. 2013 ^P	
Total nonfarm.....	131,604	135,560	132,644	133,603	133,080	134,691	134,810	135,046	236
Total private.....	109,333	113,321	110,920	111,432	111,136	112,817	112,957	113,203	246
Goods-producing.....	17,802	18,416	18,040	18,087	18,365	18,522	18,563	18,630	67
Mining and logging.....	832	855	845	852	851	860	864	869	5
Logging.....	48.2	50.8	47.8	49.3	49.7	50.6	49.0	50.7	1.7
Mining.....	783.6	804.0	797.6	802.5	800.9	809.2	814.6	817.8	3.2
Oil and gas extraction.....	180.6	190.9	190.6	190.9	183.1	191.7	192.2	193.3	1.1
Mining, except oil and gas ¹	214.0	219.8	215.4	217.1	225.1	224.3	226.1	227.3	1.2
Coal mining.....	89.2	83.4	83.3	84.3	89.7	83.8	83.8	84.5	0.7
Support activities for mining.....	389.0	393.3	391.6	394.5	392.7	393.2	396.3	397.2	0.9
Construction.....	5,219	5,622	5,341	5,369	5,644	5,711	5,736	5,784	48
Construction of buildings.....	1,177.1	1,248.3	1,197.1	1,199.6	1,239.2	1,249.6	1,251.7	1,260.2	8.5
Residential building.....	545.5	575.5	546.4	546.7	577.1	574.4	575.2	577.5	2.3
Nonresidential building.....	631.6	672.8	650.7	652.9	662.1	675.2	676.5	682.7	6.2
Heavy and civil engineering construction.....	754.4	847.2	781.3	789.2	866.5	884.6	890.4	898.6	8.2
Specialty trade contractors.....	3,287.7	3,526.2	3,362.7	3,380.4	3,538.6	3,576.5	3,593.7	3,625.4	31.7
Residential specialty trade contractors.....	1,354.5	1,472.4	1,410.1	1,418.7	1,467.4	1,502.6	1,514.1	1,531.2	17.1
Nonresidential specialty trade contractors.....	1,933.2	2,053.8	1,952.6	1,961.7	2,071.2	2,073.9	2,079.6	2,094.2	14.6
Manufacturing.....	11,751	11,939	11,854	11,866	11,870	11,951	11,963	11,977	14
Durable goods.....	7,369	7,490	7,449	7,454	7,426	7,494	7,500	7,506	6
Wood products.....	329.7	342.0	337.4	339.0	339.5	343.9	345.1	349.1	4.0
Nonmetallic mineral products.....	353.5	360.5	350.6	351.8	369.8	365.6	365.4	366.3	0.9
Primary metals.....	398.9	397.3	397.4	394.5	400.3	398.3	398.0	396.0	-2.0
Fabricated metal products.....	1,384.7	1,421.9	1,417.0	1,422.6	1,396.4	1,424.0	1,426.7	1,433.1	6.4
Machinery.....	1,088.0	1,103.0	1,100.1	1,097.7	1,091.4	1,100.9	1,101.9	1,100.1	-1.8
Computer and electronic products ¹	1,095.6	1,088.3	1,084.5	1,084.2	1,097.5	1,086.7	1,086.9	1,085.7	-1.2
Computer and peripheral equipment.....	157.4	158.8	159.2	158.6	157.6	158.4	159.4	158.9	-0.5
Communications equipment.....	110.7	108.8	107.8	107.6	110.8	108.3	107.8	107.8	0.0
Semiconductors and electronic components.....	385.4	382.9	381.0	380.5	385.9	382.5	381.9	381.2	-0.7
Electronic instruments.....	401.4	397.4	396.6	398.1	401.9	397.4	397.7	398.0	0.3
Electrical equipment and appliances.....	368.7	369.5	365.6	362.9	370.2	368.3	366.1	364.3	-1.8
Transportation equipment ¹	1,428.0	1,478.4	1,473.0	1,474.6	1,432.2	1,474.9	1,476.6	1,478.9	2.3
Motor vehicles and parts ²	753.2	788.6	785.1	786.7	754.8	786.0	787.4	788.1	0.7
Furniture and related products.....	346.7	348.3	346.2	349.1	351.1	350.8	352.1	353.4	1.3
Miscellaneous durable goods manufacturing.....	574.7	581.1	577.1	577.4	577.4	580.1	580.7	579.5	-1.2
Nondurable goods.....	4,382	4,449	4,405	4,412	4,444	4,457	4,463	4,471	8
Food manufacturing.....	1,426.1	1,463.1	1,438.6	1,438.9	1,458.3	1,465.6	1,467.6	1,471.0	3.4
Textile mills.....	118.3	115.3	113.7	113.7	119.1	115.7	114.9	114.5	-0.4
Textile product mills.....	114.5	117.8	116.1	115.6	116.4	117.5	117.3	116.9	-0.4
Apparel.....	148.3	147.3	145.5	148.5	149.3	148.1	148.7	149.0	0.3
Paper and paper products.....	377.6	377.5	376.9	376.8	379.7	377.2	377.6	378.6	1.0
Printing and related support activities.....	461.2	458.2	453.7	452.5	466.1	457.3	457.3	456.9	-0.4
Petroleum and coal products.....	109.3	113.1	112.8	111.3	113.4	115.0	116.6	115.1	-1.5
Chemicals.....	778.4	787.1	788.0	789.5	782.5	787.1	790.0	792.6	2.6
Plastics and rubber products.....	635.7	648.6	644.1	648.3	640.0	649.6	650.8	652.7	1.9
Miscellaneous nondurable goods manufacturing.....	212.6	220.6	216.0	216.5	219.5	223.4	222.3	223.3	1.0
Private service-providing.....	91,531	94,905	92,880	93,345	92,771	94,295	94,394	94,573	179
Trade, transportation, and utilities.....	24,971	26,425	25,608	25,423	25,377	25,769	25,795	25,825	30
Wholesale trade.....	5,581.1	5,723.6	5,678.4	5,683.6	5,634.9	5,715.3	5,730.8	5,736.7	5.9
Durable goods.....	2,795.7	2,849.3	2,835.1	2,836.1	2,816.8	2,847.7	2,853.7	2,856.0	2.3
Nondurable goods.....	1,931.0	1,994.7	1,972.2	1,972.5	1,957.4	1,990.4	1,998.8	1,999.1	0.3
Electronic markets and agents and brokers... ³	854.4	879.6	871.1	875.0	860.7	877.2	878.3	881.6	3.3
Retail trade.....	14,514.2	15,538.3	14,938.7	14,771.3	14,804.7	15,004.1	15,033.1	15,056.8	23.7
Motor vehicle and parts dealers ¹	1,701.0	1,736.2	1,722.2	1,728.2	1,726.1	1,747.4	1,751.9	1,753.3	1.4
Automobile dealers.....	1,074.4	1,098.5	1,094.4	1,096.1	1,083.9	1,103.2	1,105.6	1,105.8	0.2
Furniture and home furnishings stores.....	433.9	470.8	453.3	446.6	439.2	446.5	448.5	451.4	2.9

See footnotes at end of table.

ESTABLISHMENT DATA
Table B-1. Employees on nonfarm payrolls by industry sector and selected industry detail
— Continued

[In thousands]

Industry	Not seasonally adjusted				Seasonally adjusted				Change from: Jan.2013 - Feb.2013 ^P
	Feb. 2012	Dec. 2012	Jan. 2013 ^P	Feb. 2013 ^P	Feb. 2012	Dec. 2012	Jan. 2013 ^P	Feb. 2013 ^P	
Retail trade - Continued									
Electronics and appliance stores.....	515.4	538.4	526.9	510.1	518.7	513.3	519.7	511.6	-8.1
Building material and garden supply stores...	1,113.8	1,138.6	1,115.0	1,131.1	1,164.3	1,177.1	1,177.4	1,181.6	4.2
Food and beverage stores.....	2,810.1	2,913.0	2,878.2	2,866.0	2,841.9	2,887.1	2,892.2	2,897.8	5.6
Health and personal care stores.....	987.2	1,036.1	1,020.1	1,018.0	994.4	1,017.7	1,020.0	1,024.3	4.3
Gasoline stations.....	823.0	844.8	832.3	835.5	836.8	846.3	845.3	848.3	3.0
Clothing and clothing accessories stores.....	1,319.2	1,620.1	1,467.1	1,405.0	1,375.4	1,454.1	1,461.5	1,463.5	2.0
Sporting goods, hobby, book, and music stores.....	562.1	619.7	582.4	566.1	573.4	576.4	576.7	578.0	1.3
General merchandise stores ¹	3,036.9	3,314.8	3,106.4	3,033.7	3,101.8	3,088.5	3,090.4	3,094.4	4.0
Department stores.....	1,497.6	1,638.8	1,501.8	1,450.4	1,528.7	1,475.4	1,475.8	1,476.8	1.0
Miscellaneous store retailers.....	774.4	826.4	788.3	793.0	787.4	807.4	806.0	808.0	2.0
Nonstore retailers.....	437.2	479.4	446.5	438.0	445.3	442.3	443.5	444.6	1.1
Transportation and warehousing.....	4,325.3	4,609.2	4,435.6	4,411.4	4,384.4	4,493.8	4,473.4	4,472.1	-1.3
Air transportation.....	457.2	449.6	443.7	442.1	459.5	450.8	446.3	445.0	-1.3
Rail transportation.....	228.5	230.0	228.4	228.4	230.5	230.4	230.5	230.5	0.0
Water transportation.....	62.0	62.1	60.3	60.4	63.6	62.7	62.1	62.5	0.4
Truck transportation.....	1,304.5	1,368.4	1,349.4	1,348.3	1,340.4	1,370.8	1,377.3	1,382.9	5.6
Transit and ground passenger transportation.....	457.6	478.6	478.2	474.8	446.5	462.1	465.6	462.2	-3.4
Pipeline transportation.....	43.6	44.4	44.2	44.4	43.7	44.2	44.1	44.4	0.3
Scenic and sightseeing transportation.....	20.9	22.8	18.7	19.2	28.1	27.2	26.6	26.4	-0.2
Support activities for transportation.....	567.9	592.8	587.2	588.7	572.0	589.1	590.8	592.0	1.2
Couriers and messengers.....	519.7	648.7	543.4	526.0	529.2	560.3	540.6	538.3	-2.3
Warehousing and storage.....	663.4	711.8	682.1	679.1	670.9	696.2	689.5	687.9	-1.6
Utilities.....	550.2	554.1	555.3	556.2	552.9	555.3	557.5	558.9	1.4
Information.....	2,679	2,685	2,639	2,704	2,681	2,676	2,677	2,697	20
Publishing industries, except Internet.....	738.4	733.9	727.2	726.1	740.3	729.9	730.2	728.2	-2.0
Motion picture and sound recording industries.....	370.0	377.3	342.7	403.5	370.8	379.3	374.8	395.6	20.8
Broadcasting, except Internet.....	283.3	287.1	285.2	287.3	283.9	285.8	286.3	287.1	0.8
Telecommunications.....	868.9	854.2	856.1	859.0	865.9	851.1	854.8	855.2	0.4
Data processing, hosting and related services.....	248.7	252.9	250.6	251.0	249.6	251.6	252.9	252.1	-0.8
Other information services.....	169.3	179.8	177.4	177.2	170.6	178.5	178.2	178.5	0.3
Financial activities.....	7,694	7,846	7,789	7,798	7,740	7,831	7,837	7,844	7
Finance and insurance.....	5,793.6	5,888.5	5,863.3	5,863.3	5,799.6	5,869.9	5,871.7	5,869.5	-2.2
Monetary authorities - central bank.....	17.1	17.4	16.6	16.5	17.1	17.3	16.8	16.7	-0.1
Credit intermediation and related activities ¹	2,559.7	2,610.5	2,602.7	2,602.3	2,558.4	2,601.9	2,602.7	2,601.0	-1.7
Depository credit intermediation ¹	1,735.6	1,742.6	1,740.5	1,737.8	1,737.2	1,739.1	1,740.4	1,739.2	-1.2
Commercial banking.....	1,319.0	1,316.5	1,315.8	1,313.6	1,320.2	1,314.7	1,317.1	1,315.3	-1.8
Securities, commodity contracts, investments.....	810.9	819.9	816.9	820.4	812.6	818.0	819.9	821.7	1.8
Insurance carriers and related activities.....	2,320.0	2,353.3	2,340.4	2,338.2	2,325.1	2,346.1	2,345.4	2,343.6	-1.8
Funds, trusts, and other financial vehicles.....	85.9	87.4	86.7	85.9	86.4	86.6	86.9	86.5	-0.4
Real estate and rental and leasing.....	1,900.7	1,957.4	1,925.2	1,934.9	1,940.8	1,961.2	1,965.2	1,974.1	8.9
Real estate.....	1,385.6	1,426.5	1,404.0	1,409.5	1,411.1	1,423.0	1,428.3	1,433.0	4.7
Rental and leasing services.....	490.7	506.9	497.9	502.1	505.1	514.6	513.4	517.6	4.2
Lessors of nonfinancial intangible assets.....	24.4	24.0	23.3	23.3	24.6	23.6	23.5	23.5	0.0
Professional and business services.....	17,486	18,237	17,809	17,984	17,753	18,152	18,168	18,241	73
Professional and technical services ¹	7,885.8	8,040.5	8,012.0	8,105.9	7,804.2	7,995.8	7,997.4	8,024.2	26.8
Legal services.....	1,113.5	1,131.9	1,117.1	1,118.5	1,119.7	1,128.0	1,124.5	1,124.7	0.2
Accounting and bookkeeping services.....	1,046.3	924.1	998.7	1,058.5	905.3	914.5	906.5	917.4	10.9
Architectural and engineering services.....	1,294.2	1,336.3	1,315.2	1,319.9	1,313.1	1,336.0	1,336.3	1,339.4	3.1
Computer systems design and related services.....	1,585.2	1,664.1	1,655.1	1,665.9	1,588.8	1,658.5	1,663.6	1,669.4	5.8
Management and technical consulting services.....	1,090.7	1,158.9	1,140.4	1,149.7	1,100.7	1,145.4	1,154.8	1,159.2	4.4
Management of companies and enterprises.....	1,980.2	2,028.9	2,011.7	2,009.2	1,991.9	2,020.9	2,020.3	2,022.2	1.9
Administrative and waste services.....	7,620.0	8,167.5	7,785.5	7,869.1	7,957.3	8,135.2	8,150.0	8,194.1	44.1

See footnotes at end of table.

ESTABLISHMENT DATA

Table B-1. Employees on nonfarm payrolls by industry sector and selected industry detail

— Continued

[In thousands]

Industry	Not seasonally adjusted				Seasonally adjusted				Change from: Jan.2013 - Feb.2013 ^p
	Feb. 2012	Dec. 2012	Jan. 2013 ^p	Feb. 2013 ^p	Feb. 2012	Dec. 2012	Jan. 2013 ^p	Feb. 2013 ^p	
Administrative and waste services - Continued									
Administrative and support services ¹	7,256.3	7,794.3	7,413.7	7,499.6	7,585.0	7,759.3	7,772.2	7,816.5	44.3
Employment services ¹	2,969.3	3,304.9	3,054.4	3,101.6	3,113.9	3,213.6	3,217.7	3,238.8	21.1
Temporary help services.....	2,347.8	2,651.2	2,428.8	2,457.9	2,472.8	2,569.2	2,566.2	2,582.2	16.0
Business support services.....	826.6	856.7	834.2	843.2	822.5	834.5	833.8	839.3	5.5
Services to buildings and dwellings.....	1,650.3	1,766.9	1,679.3	1,694.9	1,814.3	1,840.8	1,846.5	1,856.4	9.9
Waste management and remediation services.....	363.7	373.2	371.8	369.5	372.3	375.9	377.8	377.6	-0.2
Education and health services.....	20,302	20,673	20,370	20,647	20,175	20,496	20,505	20,529	24
Educational services.....	3,481.8	3,463.0	3,242.1	3,463.5	3,325.2	3,344.7	3,334.8	3,320.1	-14.7
Health care and social assistance.....	16,820.0	17,209.5	17,128.2	17,183.3	16,850.1	17,150.9	17,170.2	17,209.3	39.1
Health care ³	14,157.5	14,492.7	14,424.9	14,459.7	14,197.7	14,453.7	14,466.7	14,498.7	32.0
Ambulatory health care services ¹	6,227.4	6,441.9	6,422.5	6,443.0	6,246.1	6,419.3	6,446.0	6,459.7	13.7
Offices of physicians.....	2,362.1	2,433.0	2,418.0	2,421.3	2,367.8	2,417.9	2,423.2	2,427.5	4.3
Outpatient care centers.....	638.2	670.6	672.0	677.4	638.0	669.7	673.5	676.8	3.3
Home health care services.....	1,167.9	1,244.4	1,240.2	1,249.1	1,172.0	1,239.5	1,245.2	1,251.3	6.1
Hospitals.....	4,764.7	4,831.0	4,814.8	4,822.9	4,771.0	4,823.4	4,820.3	4,829.2	8.9
Nursing and residential care facilities ¹	3,165.4	3,219.8	3,187.6	3,193.8	3,180.6	3,211.0	3,200.4	3,209.8	9.4
Nursing care facilities.....	1,654.7	1,669.9	1,656.1	1,654.8	1,664.0	1,665.5	1,660.4	1,664.0	3.6
Social assistance ¹	2,662.5	2,716.8	2,703.3	2,723.6	2,652.4	2,697.2	2,703.5	2,710.6	7.1
Child day care services.....	868.2	869.7	865.5	874.3	853.8	857.3	857.6	859.2	1.6
Leisure and hospitality.....	13,038	13,591	13,257	13,359	13,632	13,901	13,931	13,955	24
Arts, entertainment, and recreation.....	1,749.1	1,825.6	1,757.3	1,782.1	1,956.9	1,982.0	1,986.2	1,988.9	2.7
Performing arts and spectator sports.....	368.2	396.9	369.9	385.8	400.1	414.0	414.7	417.2	2.5
Museums, historical sites, and similar institutions.....	123.8	130.1	125.4	126.4	135.9	137.4	137.7	138.4	0.7
Amusements, gambling, and recreation.....	1,257.1	1,298.6	1,262.0	1,269.9	1,420.9	1,430.6	1,433.8	1,433.3	-0.5
Accommodation and food services.....	11,289.1	11,765.8	11,499.5	11,577.2	11,675.5	11,919.2	11,945.2	11,965.8	20.6
Accommodation.....	1,724.7	1,755.2	1,724.2	1,733.1	1,815.6	1,818.3	1,821.2	1,823.0	1.8
Food services and drinking places.....	9,564.4	10,010.6	9,775.3	9,844.1	9,859.9	10,100.9	10,124.0	10,142.8	18.8
Other services.....	5,361	5,448	5,408	5,430	5,413	5,470	5,481	5,482	1
Repair and maintenance.....	1,175.5	1,191.3	1,185.3	1,192.9	1,186.2	1,199.7	1,202.5	1,203.5	1.0
Personal and laundry services.....	1,287.0	1,328.2	1,313.4	1,313.9	1,302.6	1,328.3	1,332.9	1,330.4	-2.5
Membership associations and organizations.....	2,898.1	2,928.7	2,909.6	2,922.7	2,924.5	2,941.5	2,945.2	2,947.9	2.7
Government.....	22,271	22,239	21,724	22,171	21,944	21,874	21,853	21,843	-10
Federal.....	2,806.0	2,798.0	2,771.0	2,771.0	2,832.0	2,799.0	2,795.0	2,795.0	0.0
Federal, except U.S. Postal Service.....	2,191.7	2,189.9	2,170.2	2,165.6	2,212.9	2,194.8	2,191.7	2,187.5	-4.2
U.S. Postal Service.....	614.7	608.3	600.7	605.3	618.9	603.7	603.1	607.6	4.5
State government.....	5,179.0	5,150.0	4,921.0	5,140.0	5,051.0	5,040.0	5,027.0	5,019.0	-8.0
State government education.....	2,515.6	2,502.1	2,270.9	2,492.9	2,376.4	2,381.3	2,367.2	2,361.8	-5.4
State government, excluding education.....	2,663.4	2,648.1	2,649.9	2,646.8	2,674.9	2,658.6	2,659.8	2,657.5	-2.3
Local government.....	14,286.0	14,291.0	14,032.0	14,260.0	14,061.0	14,035.0	14,031.0	14,029.0	-2.0
Local government education.....	8,134.6	8,097.0	7,880.7	8,105.1	7,795.5	7,763.2	7,761.2	7,758.7	-2.5
Local government, excluding education.....	6,150.9	6,194.0	6,150.8	6,154.9	6,265.4	6,271.3	6,269.9	6,270.2	0.3

1 Includes other industries, not shown separately.

2 Includes motor vehicles, motor vehicle bodies and trailers, and motor vehicle parts.

3 Includes ambulatory health care services, hospitals, and nursing and residential care facilities.

p Preliminary

ESTABLISHMENT DATA

Table B-2. Average weekly hours and overtime of all employees on private nonfarm payrolls by industry sector, seasonally adjusted

Industry	Feb. 2012	Dec. 2012	Jan. 2013 ^p	Feb. 2013 ^p
AVERAGE WEEKLY HOURS				
Total private.....	34.6	34.5	34.4	34.5
Goods-producing.....	40.4	40.4	40.2	40.5
Mining and logging.....	44.6	43.5	42.9	43.4
Construction.....	38.8	39.3	38.8	39.1
Manufacturing.....	40.9	40.8	40.7	40.9
Durable goods.....	41.3	41.0	41.0	41.3
Nondurable goods.....	40.2	40.4	40.2	40.3
Private service-providing.....	33.4	33.3	33.2	33.4
Trade, transportation, and utilities.....	34.7	34.5	34.3	34.6
Wholesale trade.....	38.8	38.6	38.5	38.6
Retail trade.....	31.9	31.4	31.2	31.6
Transportation and warehousing.....	38.3	38.4	38.4	38.5
Utilities.....	41.3	42.2	42.2	42.7
Information.....	36.8	36.5	36.3	36.3
Financial activities.....	37.3	37.2	37.0	37.2
Professional and business services.....	35.9	36.0	36.0	36.1
Education and health services.....	32.9	32.8	32.9	32.9
Leisure and hospitality.....	26.1	26.1	26.0	26.1
Other services.....	31.7	31.5	31.4	31.7
AVERAGE OVERTIME HOURS				
Manufacturing.....	3.3	3.3	3.3	3.4
Durable goods.....	3.3	3.2	3.2	3.3
Nondurable goods.....	3.3	3.4	3.5	3.5

p Preliminary

ESTABLISHMENT DATA

Table B-3. Average hourly and weekly earnings of all employees on private nonfarm payrolls by industry sector, seasonally adjusted

Industry	Average hourly earnings				Average weekly earnings			
	Feb. 2012	Dec. 2012	Jan. 2013 ^p	Feb. 2013 ^p	Feb. 2012	Dec. 2012	Jan. 2013 ^p	Feb. 2013 ^p
Total private.....	\$23.33	\$23.75	\$23.78	\$23.82	\$ 807.22	\$ 819.38	\$ 818.03	\$ 821.79
Goods-producing.....	24.59	24.89	24.88	24.92	993.44	1,005.56	1,000.18	1,009.26
Mining and logging.....	28.52	29.14	28.98	28.67	1,271.99	1,267.59	1,243.24	1,244.28
Construction.....	25.56	25.97	26.02	26.04	991.73	1,020.62	1,009.58	1,018.16
Manufacturing.....	23.85	24.07	24.04	24.11	975.47	982.06	978.43	986.10
Durable goods.....	25.26	25.44	25.44	25.47	1,043.24	1,043.04	1,043.04	1,051.91
Nondurable goods.....	21.42	21.72	21.64	21.77	861.08	877.49	869.93	877.33
Private service-providing.....	23.03	23.47	23.52	23.56	769.20	781.55	780.86	786.90
Trade, transportation, and utilities.....	20.23	20.73	20.77	20.79	701.98	715.19	712.41	719.33
Wholesale trade.....	26.53	27.36	27.30	27.43	1,029.36	1,056.10	1,051.05	1,058.80
Retail trade.....	16.08	16.48	16.51	16.53	512.95	517.47	515.11	522.35
Transportation and warehousing.....	21.87	21.92	22.08	22.05	837.62	841.73	847.87	848.93
Utilities.....	33.51	34.89	35.03	35.05	1,383.96	1,472.36	1,478.27	1,496.64
Information.....	31.64	32.18	32.24	32.21	1,164.35	1,174.57	1,170.31	1,169.22
Financial activities.....	28.74	29.80	29.93	30.03	1,072.00	1,108.56	1,107.41	1,117.12
Professional and business services.....	27.91	28.29	28.36	28.35	1,001.97	1,018.44	1,020.96	1,023.44
Education and health services.....	24.12	24.47	24.47	24.59	793.55	802.62	805.06	809.01
Leisure and hospitality.....	13.32	13.38	13.38	13.39	347.65	349.22	347.88	349.48
Other services.....	20.65	21.10	21.16	21.23	654.61	664.65	664.42	672.99

p Preliminary

ESTABLISHMENT DATA

Table B-4. Indexes of aggregate weekly hours and payrolls for all employees on private nonfarm payrolls by industry sector, seasonally adjusted

[2007=100]

Industry	Index of aggregate weekly hours ¹					Index of aggregate weekly payrolls ²				
	Feb. 2012	Dec. 2012	Jan. 2013 ^p	Feb. 2013 ^p	Percent change from: Jan. 2013 - Feb. 2013 ^p	Feb. 2012	Dec. 2012	Jan. 2013 ^p	Feb. 2013 ^p	Percent change from: Jan. 2013 - Feb. 2013 ^p
Total private.....	96.3	97.5	97.3	97.8	0.5	107.2	110.4	110.4	111.1	0.6
Goods-producing.....	84.5	85.3	85.0	86.0	1.2	93.9	95.9	95.6	96.8	1.3
Mining and logging.....	119.3	117.6	116.5	118.5	1.7	136.6	137.5	135.5	136.4	0.7
Construction.....	75.5	77.4	76.7	78.0	1.7	83.8	87.3	86.7	88.2	1.7
Manufacturing.....	87.3	87.7	87.6	88.1	0.6	96.9	98.2	97.9	98.8	0.9
Durable goods.....	86.3	86.5	86.6	87.3	0.8	96.9	97.7	97.8	98.7	0.9
Nondurable goods.....	89.2	89.9	89.5	89.9	0.4	96.9	99.0	98.3	99.3	1.0
Private service-providing.....	99.5	100.8	100.6	101.4	0.8	111.0	114.6	114.6	115.7	1.0
Trade, transportation, and utilities.....	95.8	96.7	96.2	97.2	1.0	104.3	107.9	107.6	108.7	1.0
Wholesale trade.....	95.4	96.3	96.3	96.6	0.3	105.6	109.9	109.7	110.6	0.8
Retail trade.....	95.9	95.7	95.3	96.6	1.4	102.0	104.3	104.0	105.6	1.5
Transportation and warehousing.....	96.1	98.8	98.3	98.5	0.2	106.7	109.9	110.2	110.3	0.1
Utilities.....	98.8	101.4	101.8	103.3	1.5	109.4	116.9	117.8	119.6	1.5
Information.....	90.1	89.2	88.7	89.4	0.8	101.5	102.2	101.9	102.5	0.6
Financial activities.....	94.6	95.4	95.0	95.6	0.6	106.0	110.9	110.9	111.9	0.9
Professional and business services.....	100.2	102.8	102.9	103.6	0.7	113.3	117.8	118.2	119.0	0.7
Education and health services.....	108.1	109.4	109.8	110.0	0.2	122.1	125.5	125.9	126.7	0.6
Leisure and hospitality.....	101.5	103.5	103.3	103.9	0.6	109.1	111.7	111.6	112.3	0.6
Other services.....	95.1	95.5	95.4	96.3	0.9	111.4	114.3	114.5	116.0	1.3

1 The indexes of aggregate weekly hours are calculated by dividing the current month's estimates of aggregate hours by the corresponding 2007 annual average aggregate hours. Aggregate hours estimates are the product of estimates of average weekly hours and employment.

2 The indexes of aggregate weekly payrolls are calculated by dividing the current month's estimates of aggregate weekly payrolls by the corresponding 2007 annual average aggregate weekly payrolls. Aggregate payrolls estimates are the product of estimates of average hourly earnings, average weekly hours, and employment.

p Preliminary

ESTABLISHMENT DATA

Table B-5. Employment of women on nonfarm payrolls by industry sector, seasonally adjusted

Industry	Women employees (in thousands)				Percent of all employees			
	Feb. 2012	Dec. 2012	Jan. 2013 ^p	Feb. 2013 ^p	Feb. 2012	Dec. 2012	Jan. 2013 ^p	Feb. 2013 ^p
Total nonfarm.....	65,677	66,466	66,528	66,608	49.4	49.3	49.3	49.3
Total private.....	53,158	53,993	54,072	54,156	47.8	47.9	47.9	47.8
Goods-producing.....	4,069	4,099	4,102	4,109	22.2	22.1	22.1	22.1
Mining and logging.....	111	115	116	116	13.0	13.4	13.4	13.3
Construction.....	715	730	732	732	12.7	12.8	12.8	12.7
Manufacturing.....	3,243	3,254	3,254	3,261	27.3	27.2	27.2	27.2
Durable goods.....	1,723	1,734	1,733	1,733	23.2	23.1	23.1	23.1
Nondurable goods.....	1,520	1,520	1,521	1,528	34.2	34.1	34.1	34.2
Private service-providing.....	49,089	49,894	49,970	50,047	52.9	52.9	52.9	52.9
Trade, transportation, and utilities.....	10,201	10,408	10,425	10,438	40.2	40.4	40.4	40.4
Wholesale trade.....	1,693.3	1,706.4	1,708.6	1,708.5	30.1	29.9	29.8	29.8
Retail trade.....	7,352.3	7,517.7	7,532.9	7,553.5	49.7	50.1	50.1	50.2
Transportation and warehousing.....	1,018.7	1,046.1	1,044.6	1,036.9	23.2	23.3	23.4	23.2
Utilities.....	137.0	138.0	138.9	139.5	24.8	24.9	24.9	25.0
Information.....	1,082	1,069	1,074	1,074	40.4	39.9	40.1	39.8
Financial activities.....	4,502	4,530	4,535	4,534	58.2	57.8	57.9	57.8
Professional and business services.....	7,849	8,037	8,055	8,087	44.2	44.3	44.3	44.3
Education and health services.....	15,485	15,723	15,744	15,768	76.8	76.7	76.8	76.8
Leisure and hospitality.....	7,122	7,249	7,255	7,265	52.2	52.1	52.1	52.1
Other services.....	2,848	2,878	2,882	2,881	52.6	52.6	52.6	52.6
Government.....	12,519	12,473	12,456	12,452	57.0	57.0	57.0	57.0

p Preliminary

ESTABLISHMENT DATA

Table B-6. Employment of production and nonsupervisory employees on private nonfarm payrolls by industry sector, seasonally adjusted¹

[In thousands]

Industry	Feb. 2012	Dec. 2012	Jan. 2013 ^p	Feb. 2013 ^p
Total private.....	91,838	93,237	93,308	93,506
Goods-producing.....	13,282	13,347	13,394	13,445
Mining and logging.....	648	639	639	647
Construction.....	4,266	4,300	4,338	4,373
Manufacturing.....	8,368	8,408	8,417	8,425
Durable goods.....	5,124	5,167	5,175	5,178
Nondurable goods.....	3,244	3,241	3,242	3,247
Private service-providing.....	78,556	79,890	79,914	80,061
Trade, transportation, and utilities.....	21,532	21,877	21,852	21,872
Wholesale trade.....	4,532.8	4,609.2	4,617.1	4,622.2
Retail trade.....	12,782.3	12,918.7	12,919.6	12,940.7
Transportation and warehousing.....	3,775.5	3,902.6	3,866.8	3,858.9
Utilities.....	441.1	446.0	448.2	450.1
Information.....	2,161	2,170	2,167	2,181
Financial activities.....	5,947	6,026	6,031	6,029
Professional and business services.....	14,642	15,009	15,008	15,084
Education and health services.....	17,701	17,965	17,986	18,011
Leisure and hospitality.....	12,038	12,273	12,288	12,302
Other services.....	4,535	4,570	4,582	4,582

¹ Data relate to production employees in mining and logging and manufacturing, construction employees in construction, and nonsupervisory employees in the service-providing industries. These groups account for approximately four-fifths of the total employment on private nonfarm payrolls.

^p Preliminary

ESTABLISHMENT DATA

Table B-7. Average weekly hours and overtime of production and nonsupervisory employees on private nonfarm payrolls by industry sector, seasonally adjusted¹

Industry	Feb. 2012	Dec. 2012	Jan. 2013 ^p	Feb. 2013 ^p
AVERAGE WEEKLY HOURS				
Total private.....	33.8	33.7	33.6	33.8
Goods-producing.....	41.3	41.3	41.1	41.3
Mining and logging.....	47.3	45.8	44.3	45.5
Construction.....	39.3	39.7	39.4	39.6
Manufacturing.....	41.8	41.8	41.7	41.9
Durable goods.....	42.3	42.1	42.0	42.3
Nondurable goods.....	41.1	41.3	41.2	41.3
Private service-providing.....	32.5	32.5	32.4	32.5
Trade, transportation, and utilities.....	33.9	33.8	33.5	33.7
Wholesale trade.....	38.8	38.7	38.7	38.9
Retail trade.....	30.7	30.4	30.0	30.2
Transportation and warehousing.....	37.9	38.2	38.2	38.3
Utilities.....	40.7	41.1	41.1	42.1
Information.....	36.1	35.8	35.7	35.8
Financial activities.....	36.6	36.9	36.6	36.7
Professional and business services.....	35.3	35.3	35.2	35.4
Education and health services.....	32.4	32.3	32.3	32.4
Leisure and hospitality.....	24.9	25.0	24.9	24.9
Other services.....	30.7	30.6	30.6	30.8
AVERAGE OVERTIME HOURS				
Manufacturing.....	4.2	4.3	4.2	4.3
Durable goods.....	4.4	4.2	4.2	4.3
Nondurable goods.....	3.9	4.4	4.3	4.3

¹ Data relate to production employees in mining and logging and manufacturing, construction employees in construction, and nonsupervisory employees in the service-providing industries. These groups account for approximately four-fifths of the total employment on private nonfarm payrolls.

^p Preliminary

ESTABLISHMENT DATA

Table B-8. Average hourly and weekly earnings of production and nonsupervisory employees on private nonfarm payrolls by industry sector, seasonally adjusted¹

Industry	Average hourly earnings				Average weekly earnings			
	Feb. 2012	Dec. 2012	Jan. 2013 ^p	Feb. 2013 ^p	Feb. 2012	Dec. 2012	Jan. 2013 ^p	Feb. 2013 ^p
Total private.....	\$19.64	\$19.93	\$19.99	\$20.04	\$ 663.83	\$ 671.64	\$ 671.66	\$ 677.35
Goods-producing.....	20.84	21.08	21.11	21.15	860.69	870.60	867.62	873.50
Mining and logging.....	25.49	26.21	26.22	26.23	1,205.68	1,200.42	1,161.55	1,193.47
Construction.....	23.80	24.15	24.22	24.23	935.34	958.76	954.27	959.51
Manufacturing.....	19.02	19.17	19.19	19.22	795.04	801.31	800.22	805.32
Durable goods.....	20.14	20.26	20.26	20.23	851.92	852.95	850.92	855.73
Nondurable goods.....	17.19	17.39	17.46	17.55	706.51	718.21	719.35	724.82
Private service-providing.....	19.38	19.68	19.75	19.80	629.85	639.60	639.90	643.50
Trade, transportation, and utilities.....	17.31	17.49	17.56	17.57	586.81	591.16	588.26	592.11
Wholesale trade.....	22.03	22.40	22.31	22.33	854.76	866.88	863.40	868.64
Retail trade.....	13.74	13.85	13.92	13.92	421.82	421.04	417.60	420.38
Transportation and warehousing.....	19.57	19.42	19.55	19.58	741.70	741.84	746.81	749.91
Utilities.....	31.05	31.80	32.19	32.12	1,263.74	1,306.98	1,323.01	1,352.25
Information.....	26.74	27.48	27.77	27.76	965.31	983.78	991.39	993.81
Financial activities.....	22.47	23.37	23.46	23.58	822.40	862.35	858.64	865.39
Professional and business services.....	23.11	23.48	23.58	23.63	815.78	828.84	830.02	836.50
Education and health services.....	21.01	21.25	21.28	21.35	680.72	686.38	687.34	691.74
Leisure and hospitality.....	11.57	11.67	11.66	11.69	288.09	291.75	290.33	291.08
Other services.....	17.47	17.77	17.81	17.88	536.33	543.76	544.99	550.70

¹ Data relate to production employees in mining and logging and manufacturing, construction employees in construction, and nonsupervisory employees in the service-providing industries. These groups account for approximately four-fifths of the total employment on private nonfarm payrolls.

^p Preliminary

ESTABLISHMENT DATA

Table B-9. Indexes of aggregate weekly hours and payrolls for production and nonsupervisory employees on private nonfarm payrolls by industry sector, seasonally adjusted¹

[2002=100]

Industry	Index of aggregate weekly hours ²					Index of aggregate weekly payrolls ³				
	Feb. 2012	Dec. 2012	Jan. 2013 ^p	Feb. 2013 ^p	Percent change from: Jan. 2013 - Feb. 2013 ^p	Feb. 2012	Dec. 2012	Jan. 2013 ^p	Feb. 2013 ^p	Percent change from: Jan. 2013 - Feb. 2013 ^p
Total private.....	103.6	104.9	104.6	105.5	0.9	135.9	139.6	139.7	141.2	1.1
Goods-producing.....	83.8	84.2	84.1	84.9	1.0	107.0	108.7	108.7	109.9	1.1
Mining and logging.....	162.9	155.5	150.4	156.4	4.0	241.5	237.1	229.4	238.7	4.1
Construction.....	83.9	85.5	85.6	86.7	1.3	107.9	111.5	111.9	113.4	1.3
Manufacturing.....	80.3	80.7	80.6	81.0	0.5	99.9	101.1	101.1	101.9	0.8
Durable goods.....	81.4	81.7	81.7	82.3	0.7	102.4	103.4	103.3	103.9	0.6
Nondurable goods.....	78.6	78.9	78.7	79.0	0.4	95.4	96.9	97.1	98.0	0.9
Private service-providing.....	109.0	110.8	110.5	111.1	0.5	144.7	149.4	149.6	150.7	0.7
Trade, transportation, and utilities.....	101.8	103.1	102.1	102.8	0.7	125.7	128.6	127.8	128.8	0.8
Wholesale trade.....	103.6	105.0	105.2	105.9	0.7	134.4	138.6	138.3	139.3	0.7
Retail trade.....	99.3	99.4	98.1	98.9	0.8	117.0	118.0	117.0	118.0	0.9
Transportation and warehousing.....	107.7	112.2	111.2	111.3	0.1	133.7	138.2	137.9	138.2	0.2
Utilities.....	91.8	93.7	94.2	96.9	2.9	119.0	124.4	126.6	129.9	2.6
Information.....	89.0	88.7	88.3	89.1	0.9	117.9	120.6	121.4	122.5	0.9
Financial activities.....	102.5	104.7	103.9	104.2	0.3	141.7	150.5	150.0	151.1	0.7
Professional and business services.....	115.8	118.7	118.4	119.7	1.1	159.3	165.9	166.1	168.3	1.3
Education and health services.....	123.7	125.2	125.3	125.9	0.5	170.9	174.9	175.3	176.7	0.8
Leisure and hospitality.....	109.8	112.4	112.1	112.2	0.1	144.3	148.9	148.4	149.0	0.4
Other services.....	97.6	98.1	98.3	99.0	0.7	124.3	127.0	127.6	128.9	1.0

1 Data relate to production employees in mining and logging and manufacturing, construction employees in construction, and nonsupervisory employees in the service-providing industries. These groups account for approximately four-fifths of the total employment on private nonfarm payrolls.

2 The indexes of aggregate weekly hours are calculated by dividing the current month's estimates of aggregate hours by the corresponding 2002 annual average aggregate hours. Aggregate hours estimates are the product of estimates of average weekly hours and employment.

3 The indexes of aggregate weekly payrolls are calculated by dividing the current month's estimates of aggregate weekly payrolls by the corresponding 2002 annual average aggregate weekly payrolls. Aggregate payrolls estimates are the product of estimates of average hourly earnings, average weekly hours, and employment.

p Preliminary